

Introduction

The plots in this report show total enrollments and nominal maximum capacities and fill rates for a selection of lower division breadth and prerequisite courses. Data are included for fall terms from 2012 to 2021.

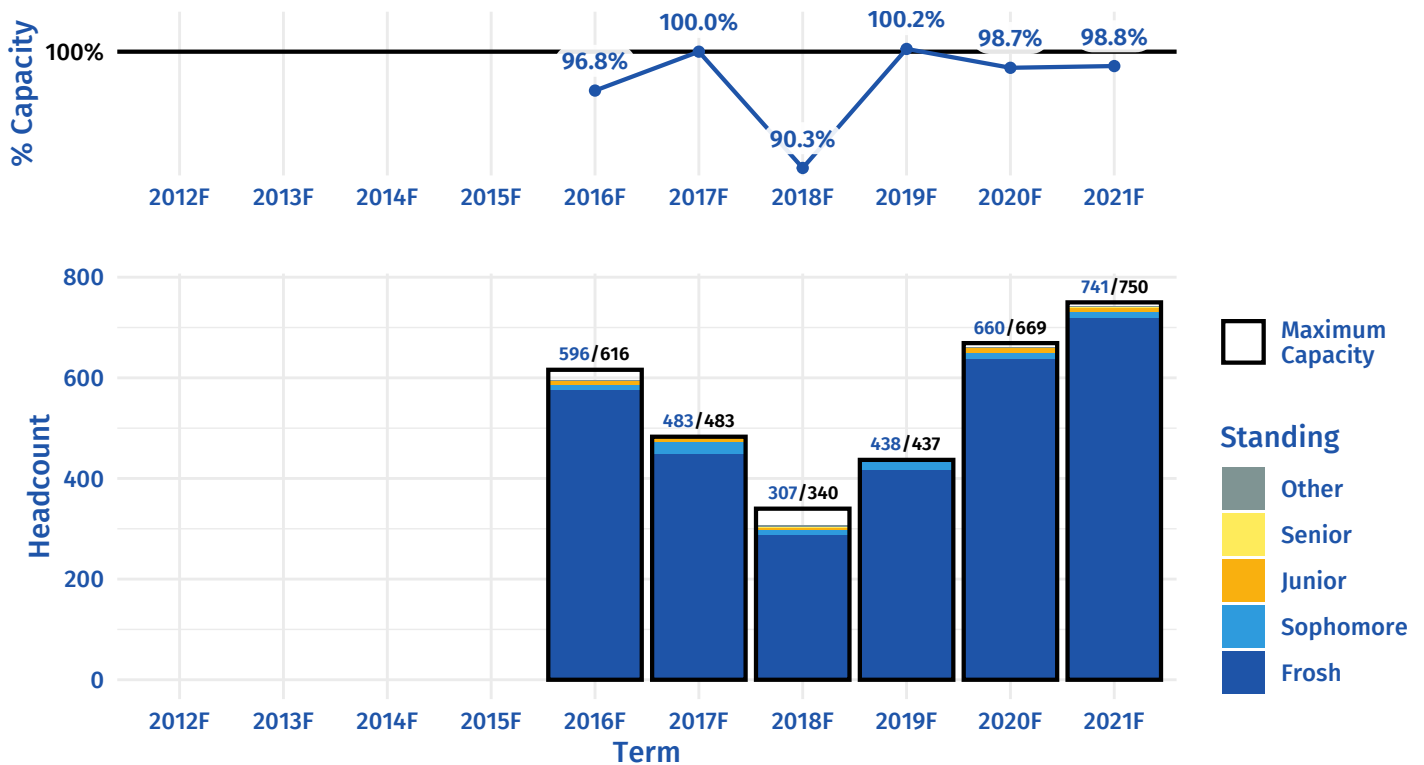
Enrollment counts are based on Institutional Research snapshots of enrollment data taken at the third week of each term. To examine how enrollment patterns may differ between courses and over time based on students' progression through the curriculum, enrollment counts are grouped by class standing, measured based on the total number of credits accrued as of the third week of the indicated fall term.

Maximum capacities are based on maximum course capacity values as reported in Banner (accessed November 2021). Nominal capacity may differ from effective capacity, especially for cross-listed courses or courses with honors sections. Fill rate is calculated for each term by dividing total enrollment by maximum capacity. In cases where multiple lecture sections of a course are offered in the same term, the values shown reflect the combined enrollment and capacity counts across all lecture sections.

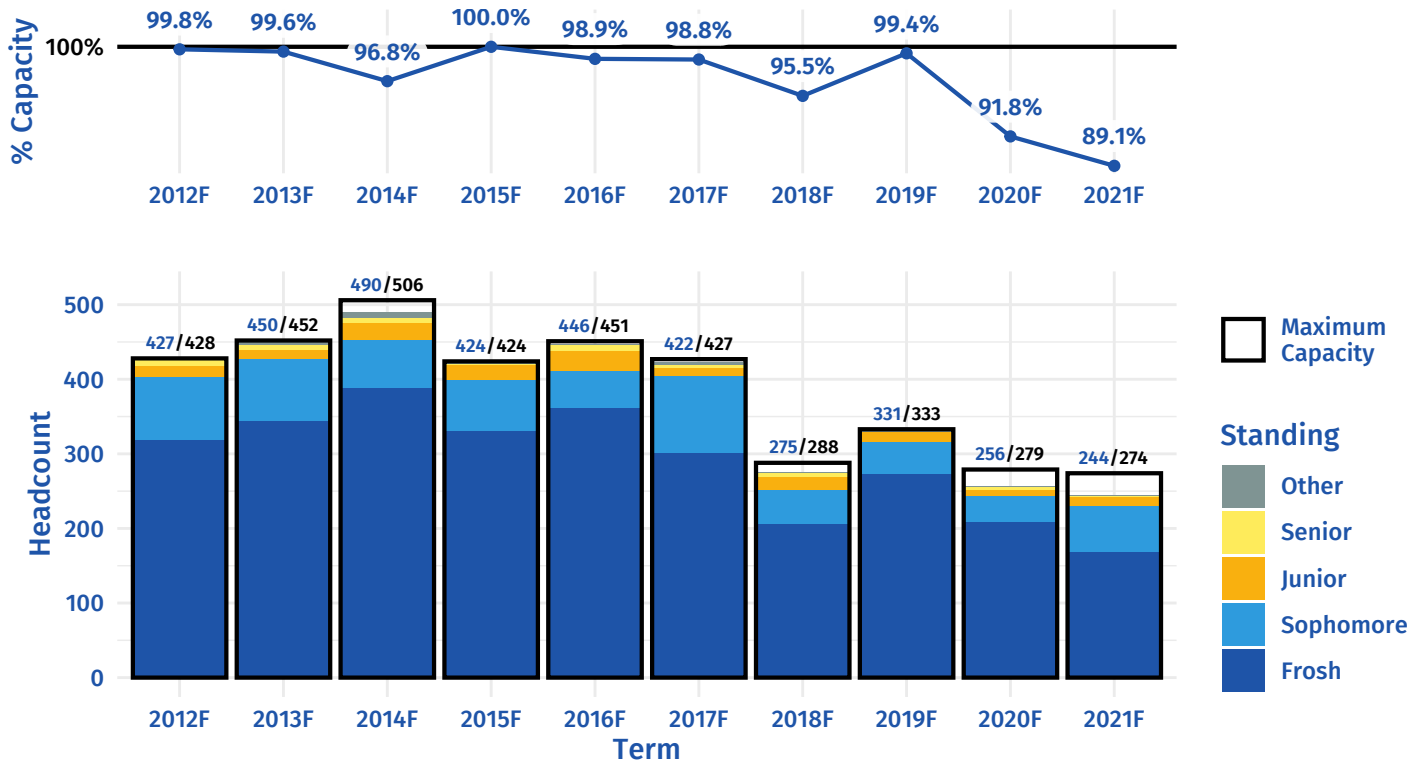
Data on selected academic student characteristics salient to enrollment and capacity patterns (college, class standing, AP and IB credits earned) are also included for reference.

First-Year Math: Precalculus

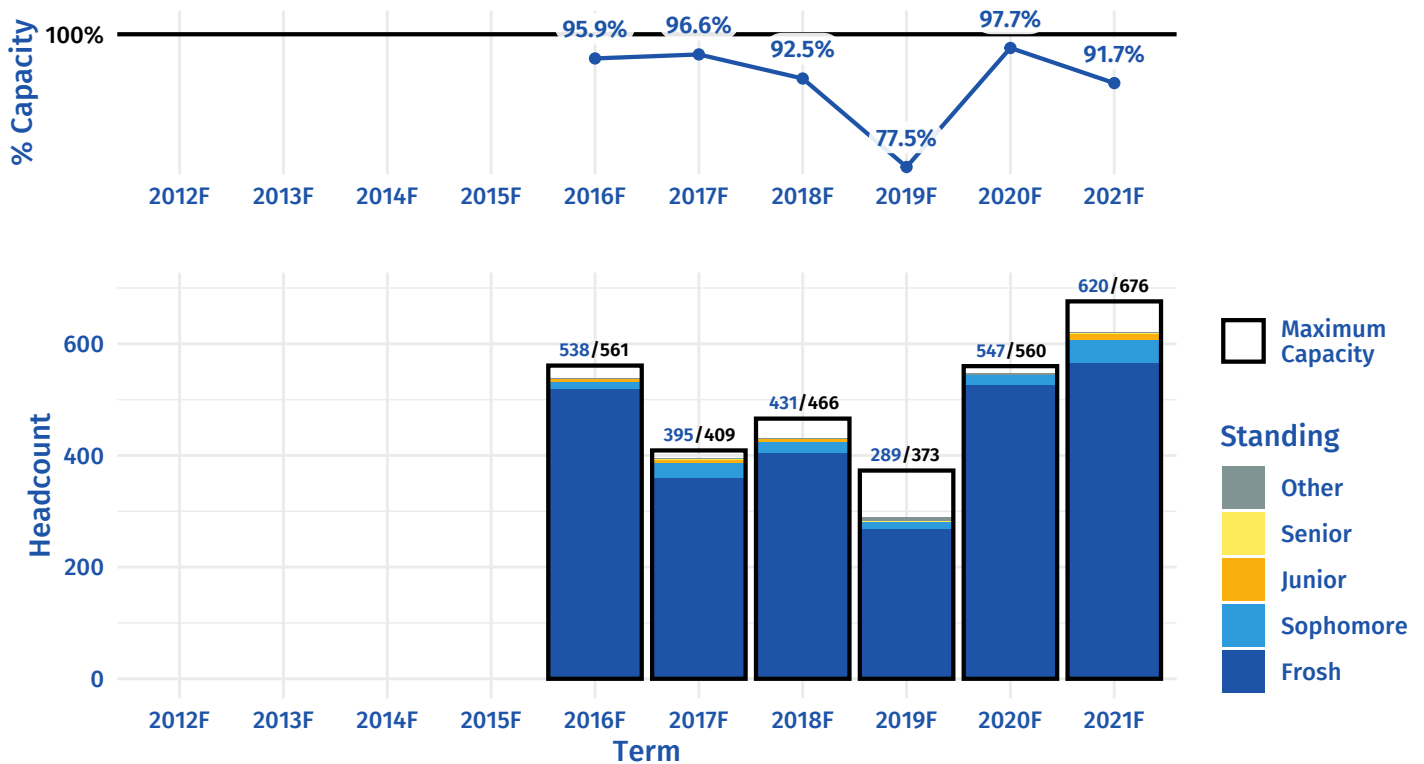
ARC035 – Intermediate Algebra Workshop



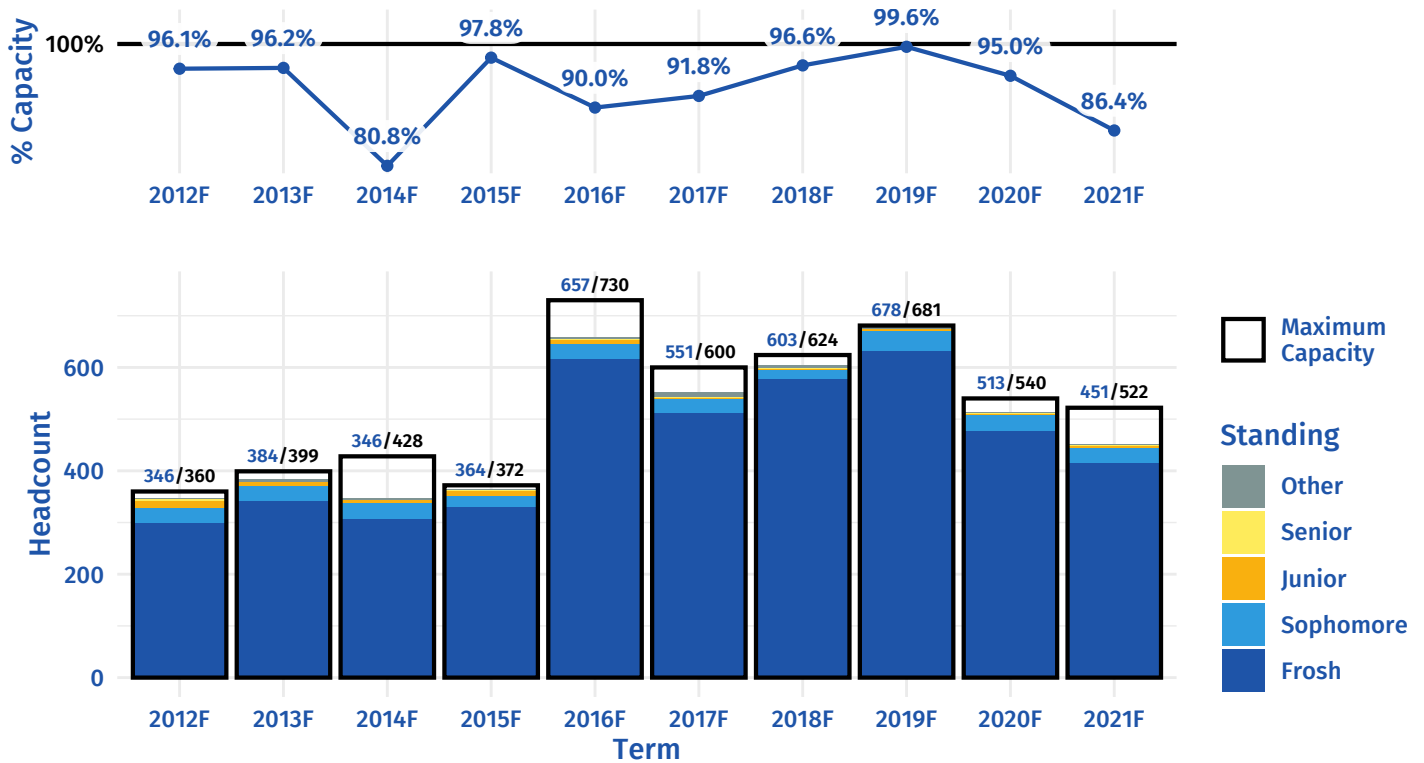
MATH 004 – INTRO COLL MATH BUS & SOC SC



MATH 006A – INTRO: COLLEGE MATH FOR SCI

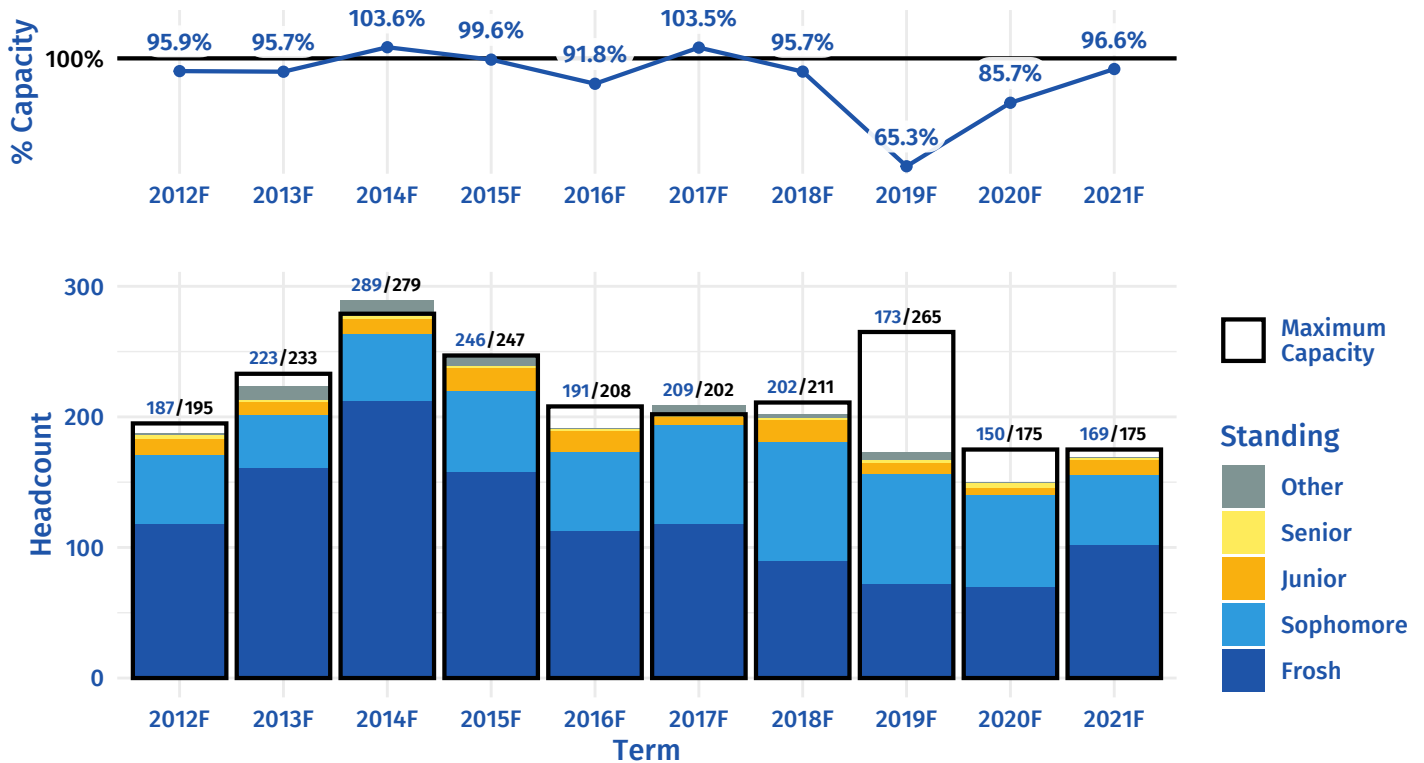


MATH 005 – PRECALCULUS

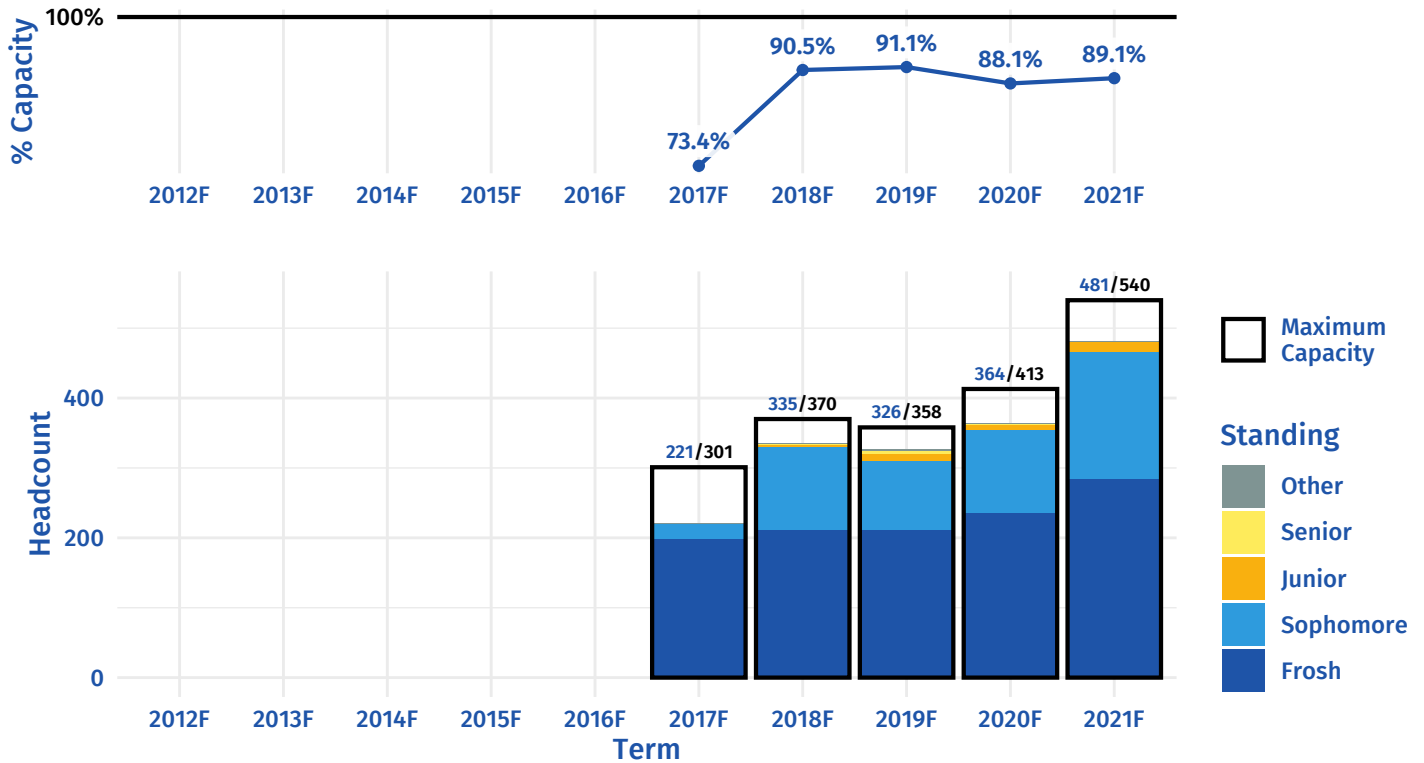


First-Year Math: Calculus

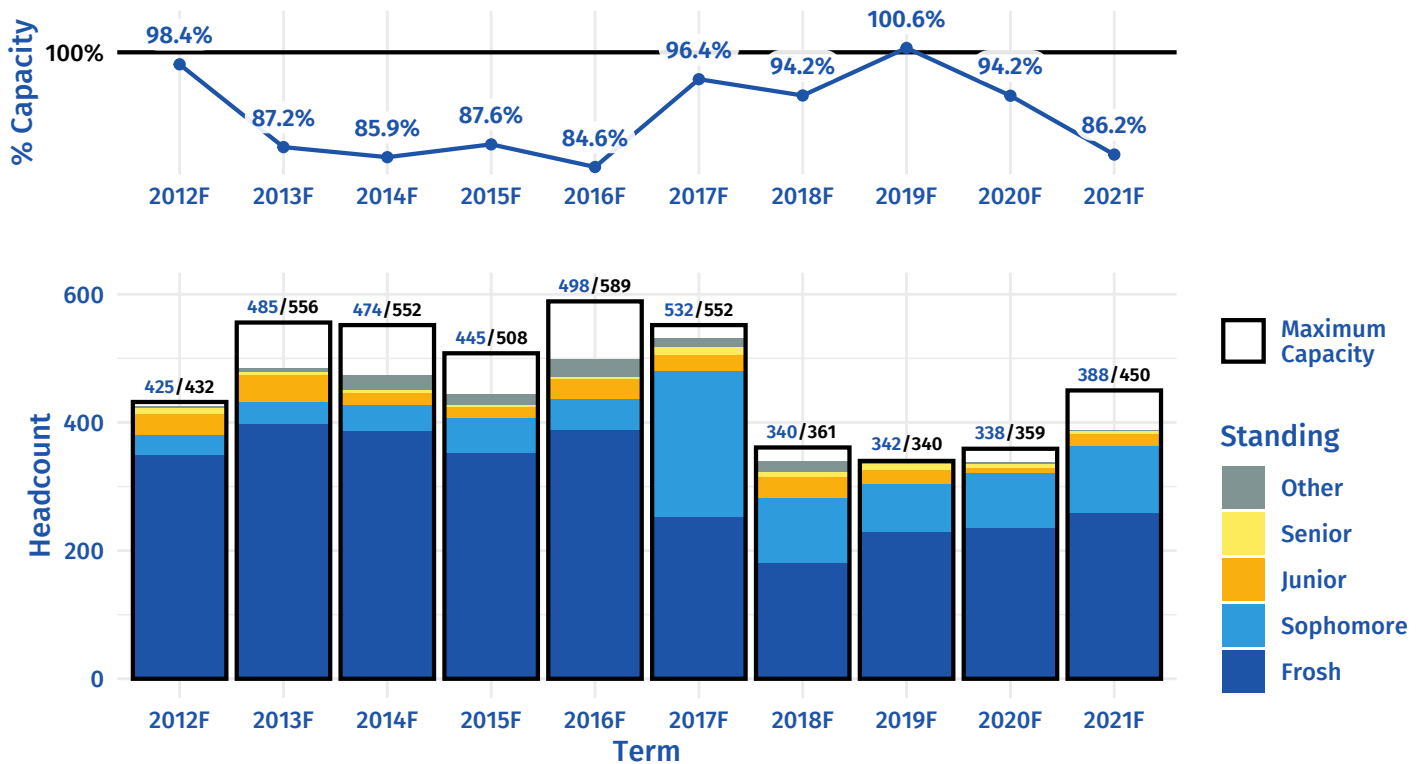
MATH 022 – CALCULUS FOR BUSINESS



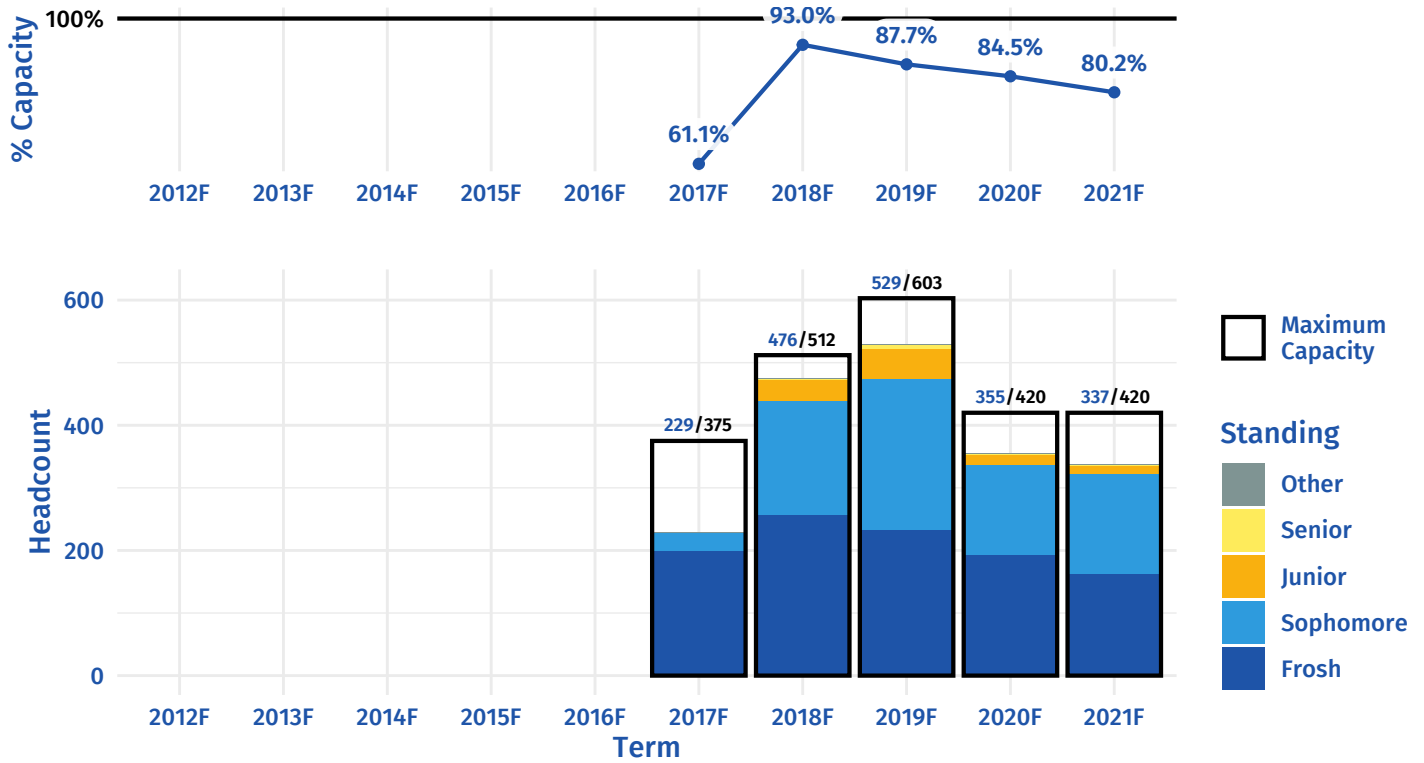
MATH 007A — CALCULUS FOR LIFE SCIENCES



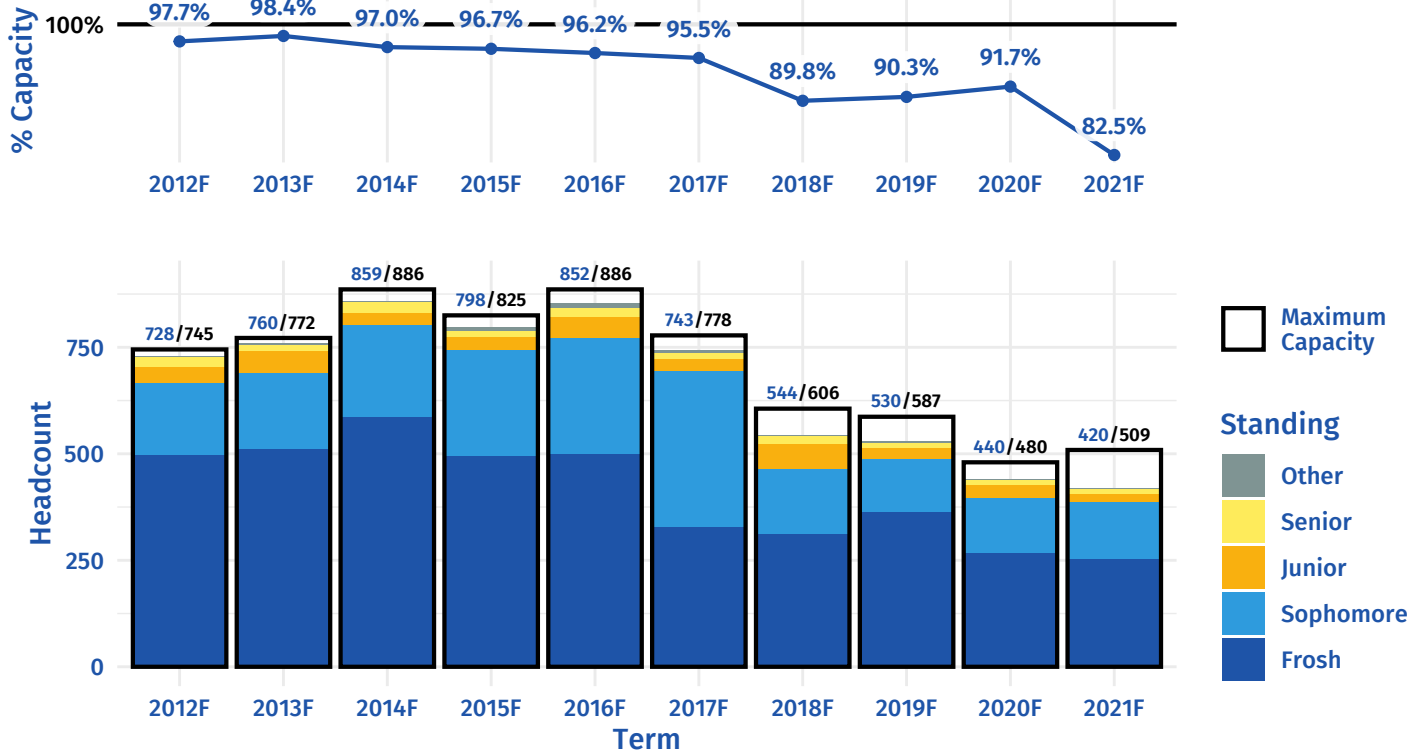
MATH 009A — FIRST-YEAR CALCULUS



MATH 007B – CALCULUS FOR LIFE SCIENCES

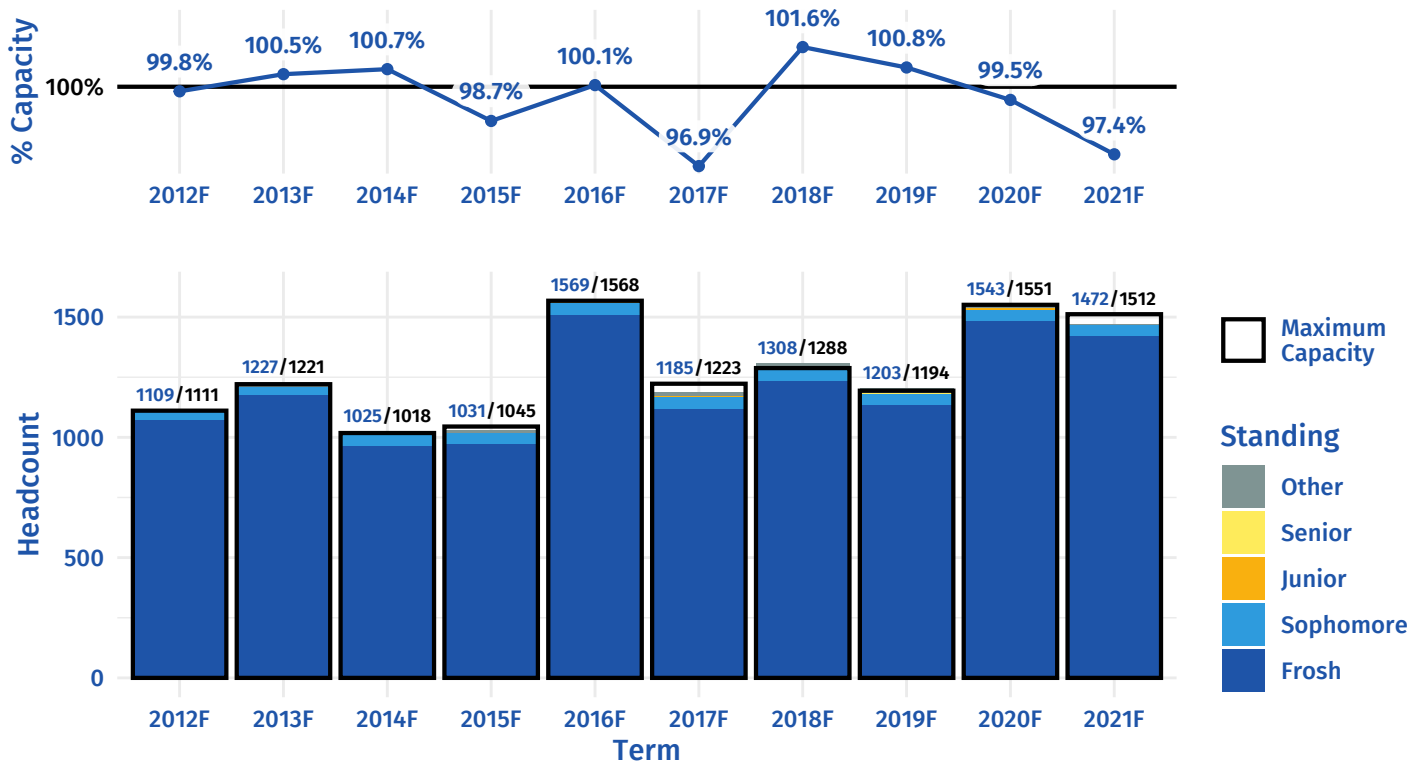


MATH 009B – FIRST-YEAR CALCULUS

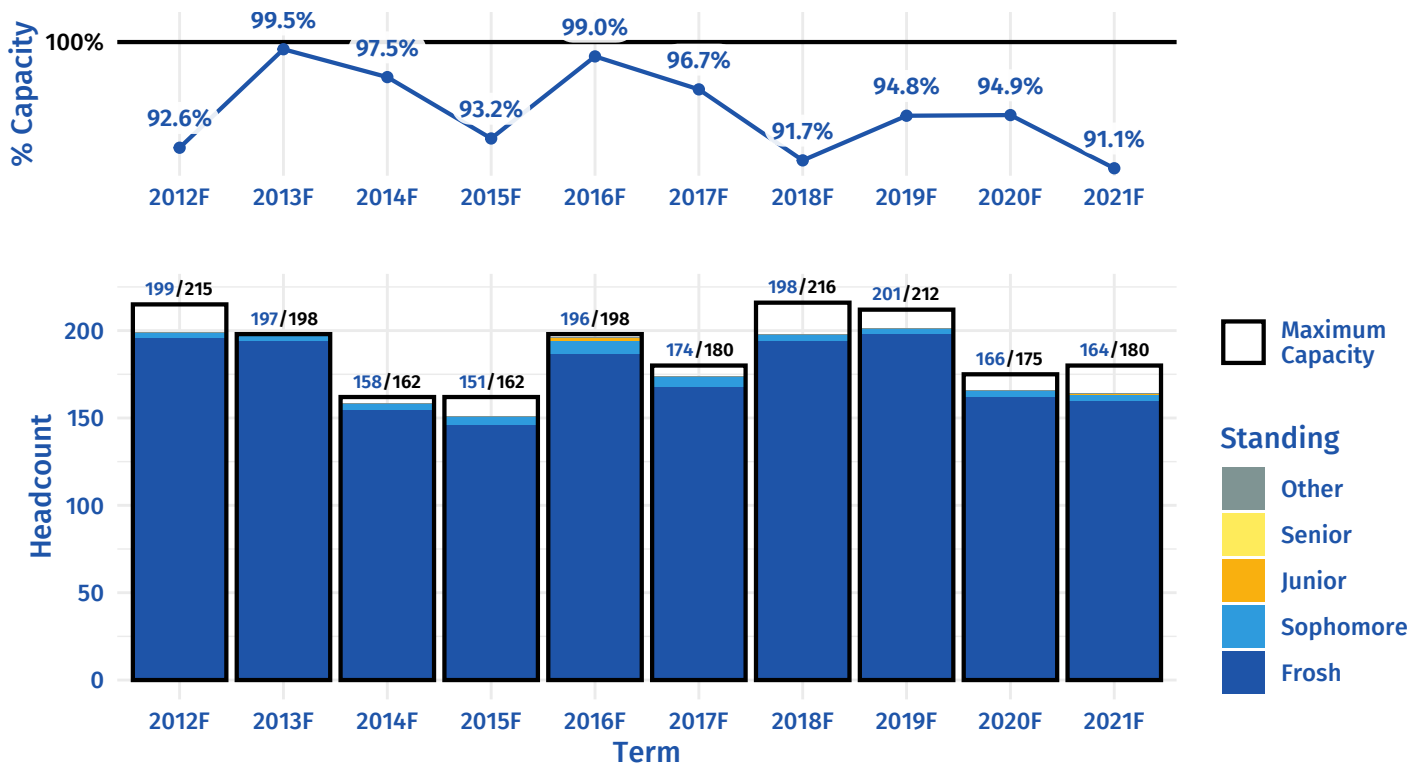


First-Year English

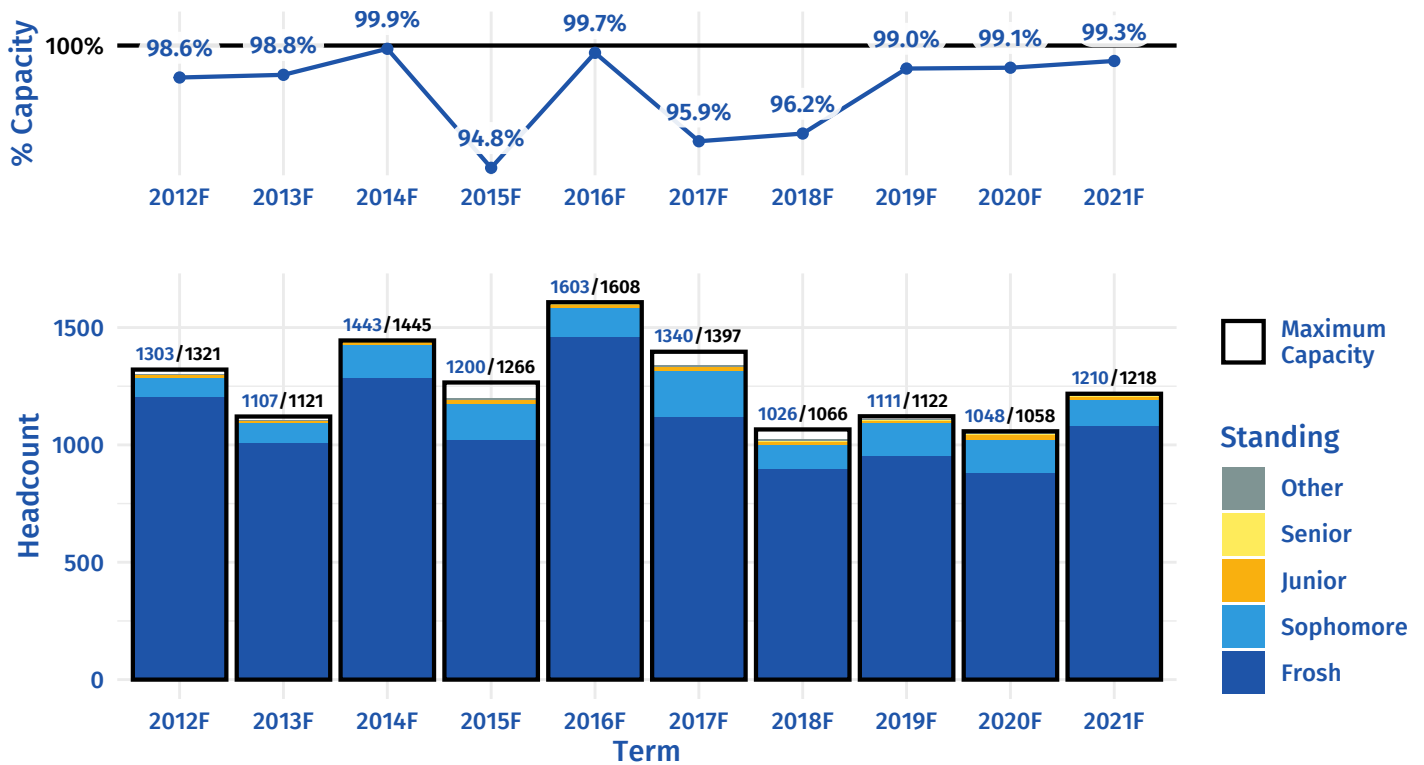
ENGL 004 – ENGLISH WRITING



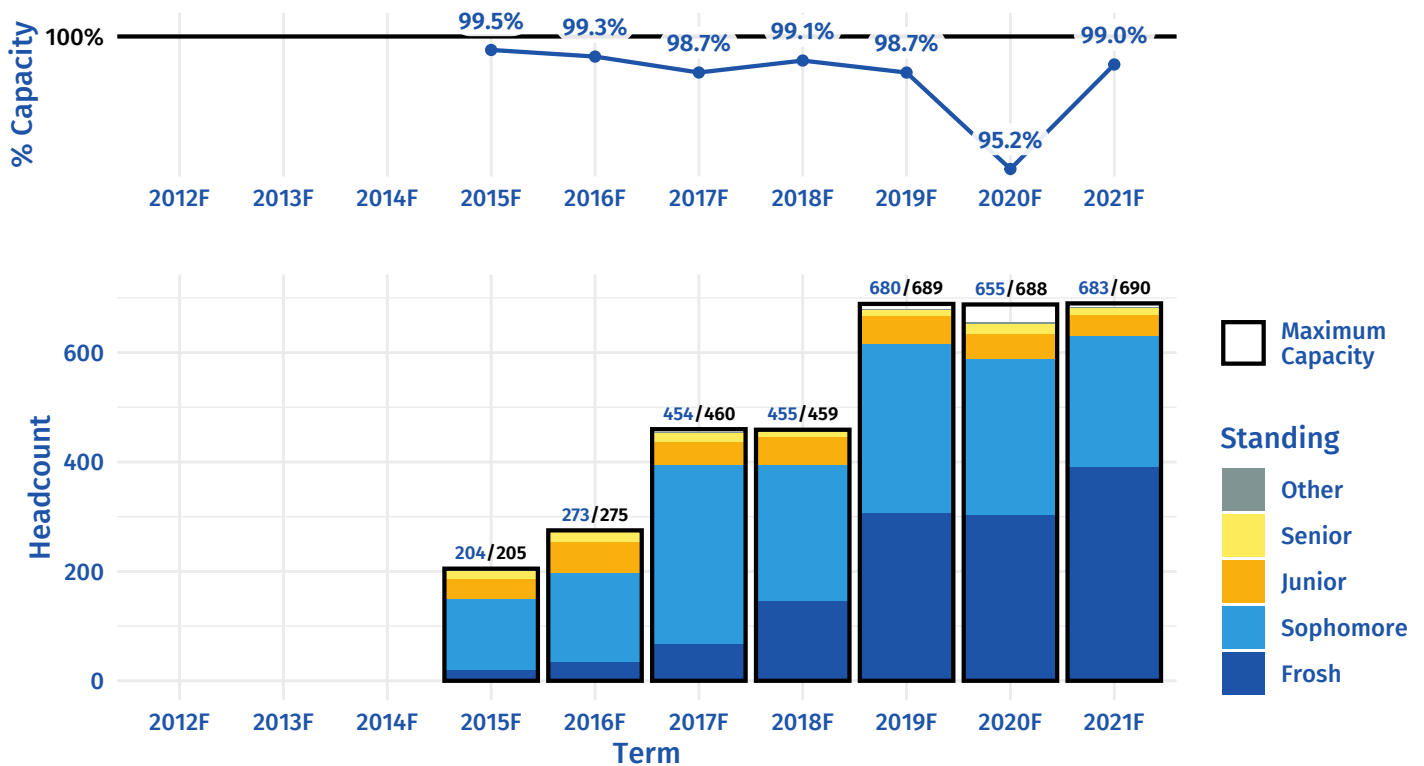
ENGL 01PA – BEGINNING COMPOSITION: INTENSIVE



ENGL 001A — BEGINNING COMPOSITION

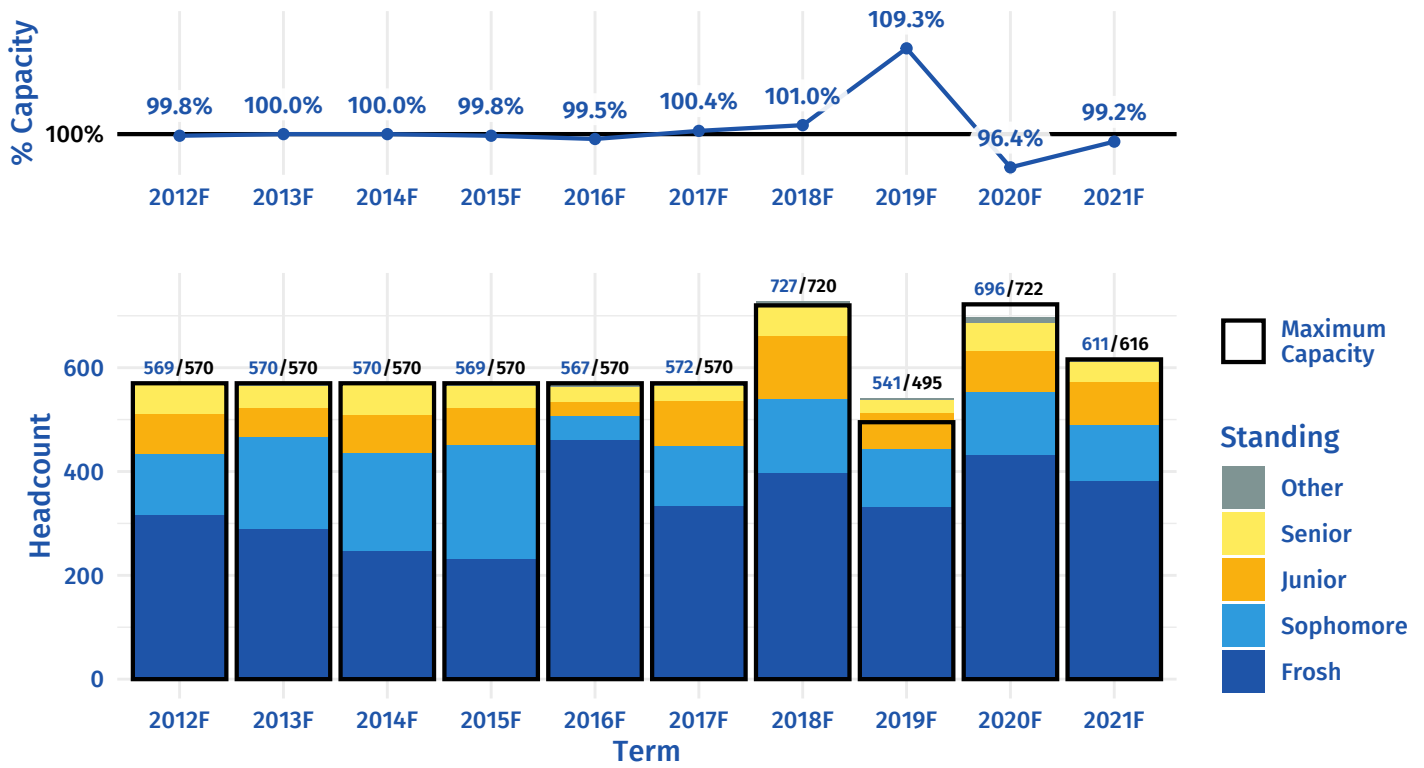


ENGL 001B — INTERMEDIATE COMPOSITION

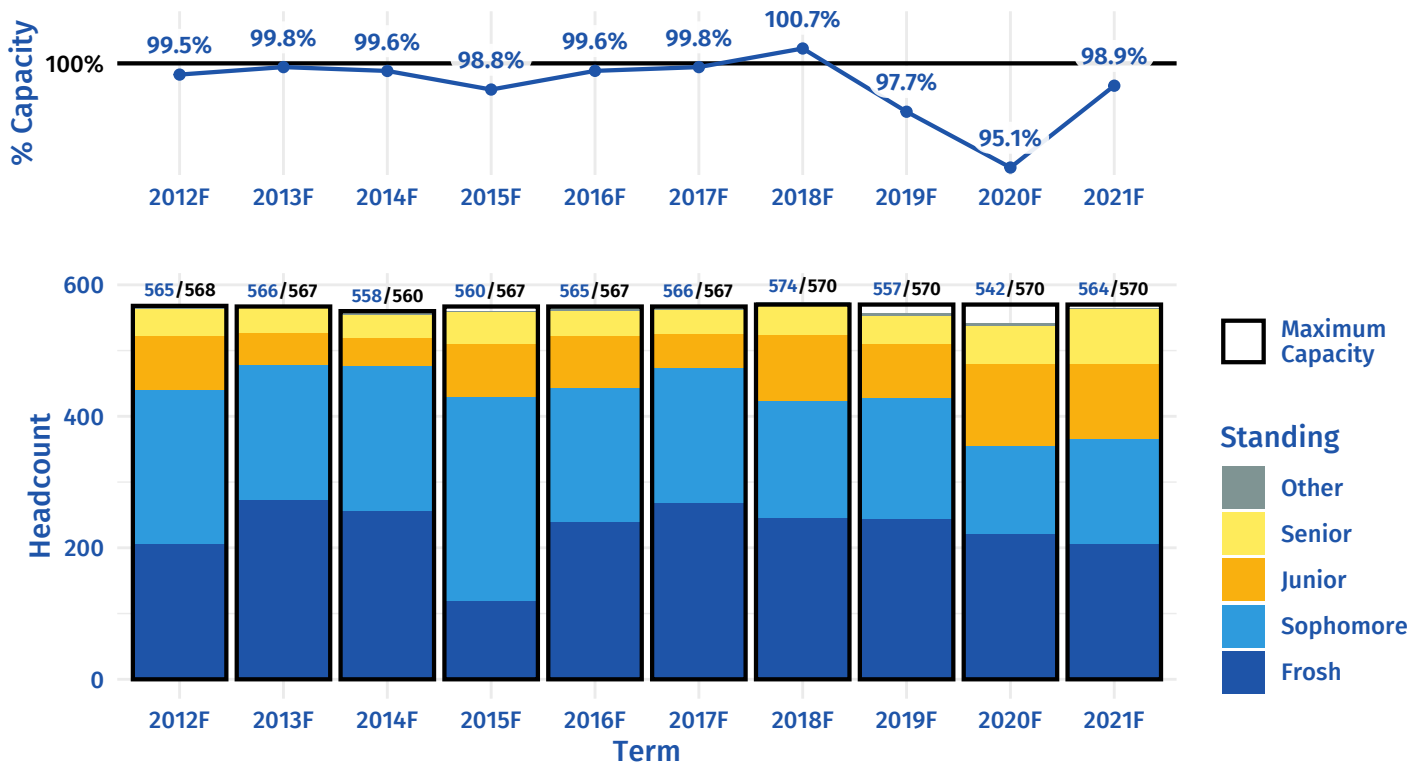


CHASS Selected Lower Division - Social Sciences

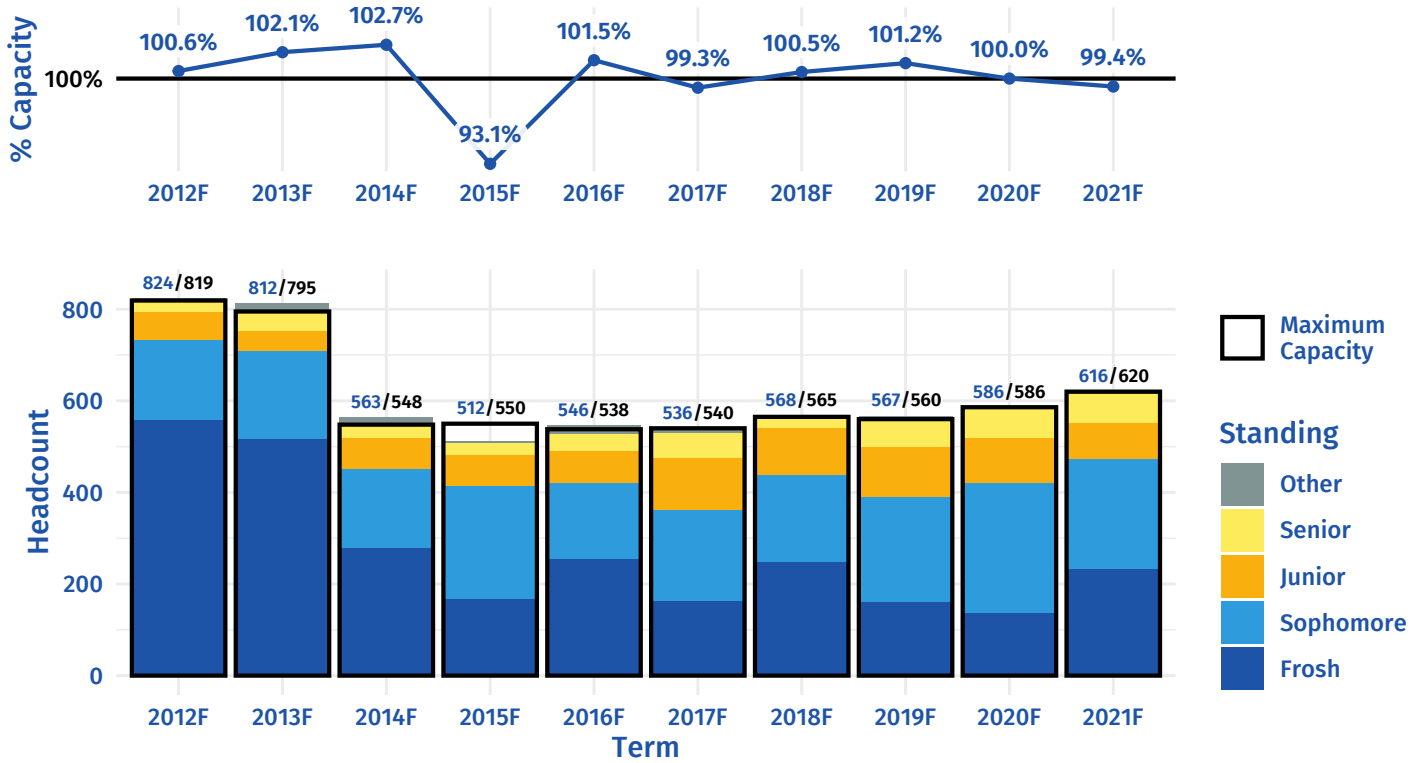
PSYC 002 – INTRODUCTORY PSYCHOLOGY



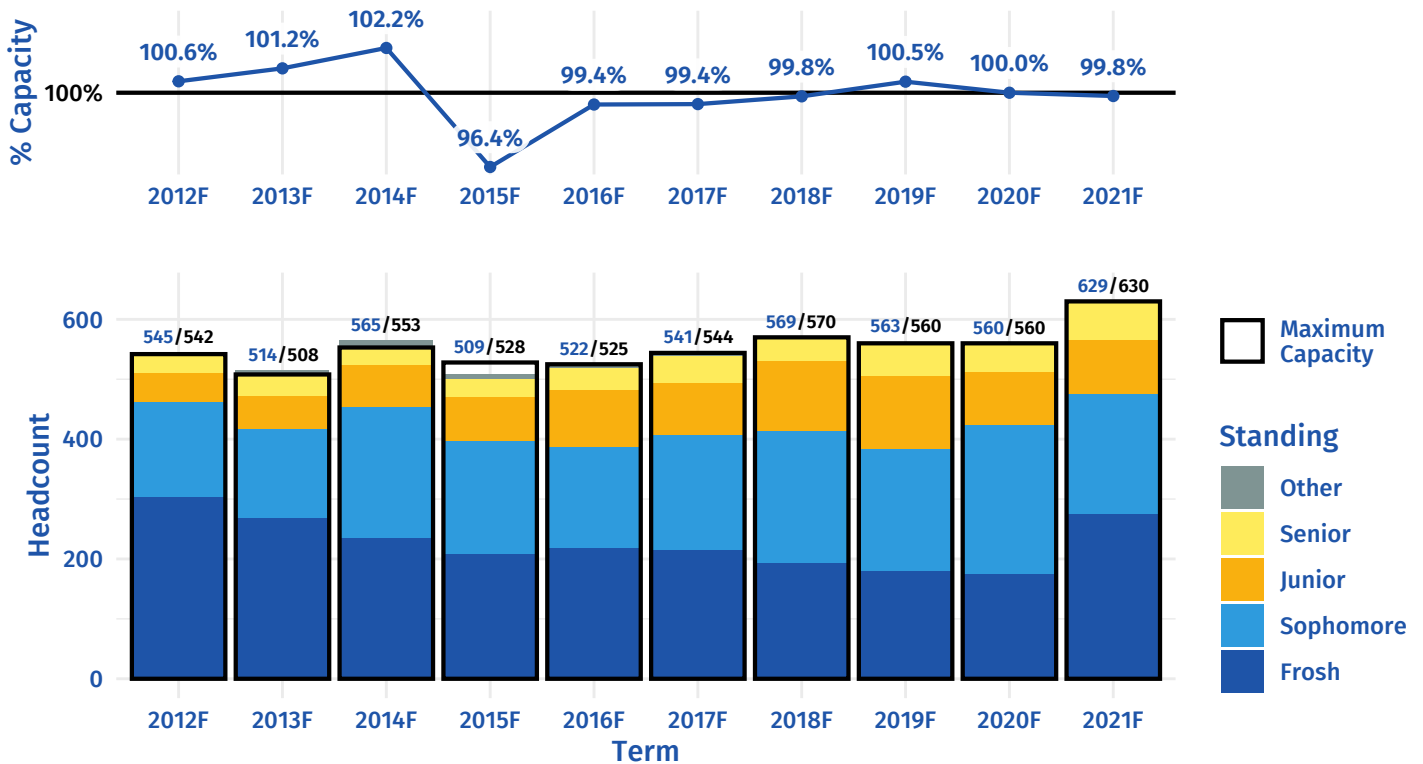
SOC 001 – INTRODUCTION TO SOCIOLOGY



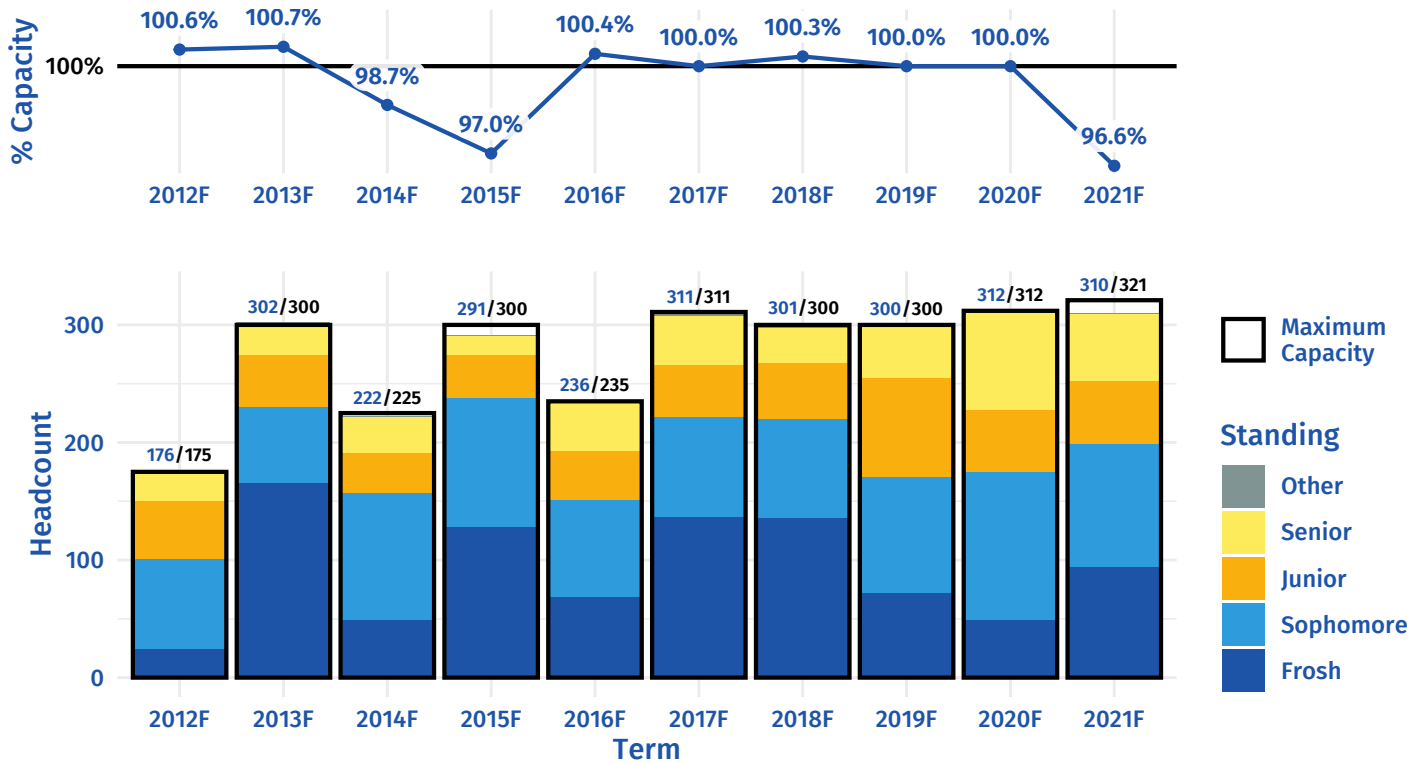
ECON 002 — INTRO TO MACROECONOMICS



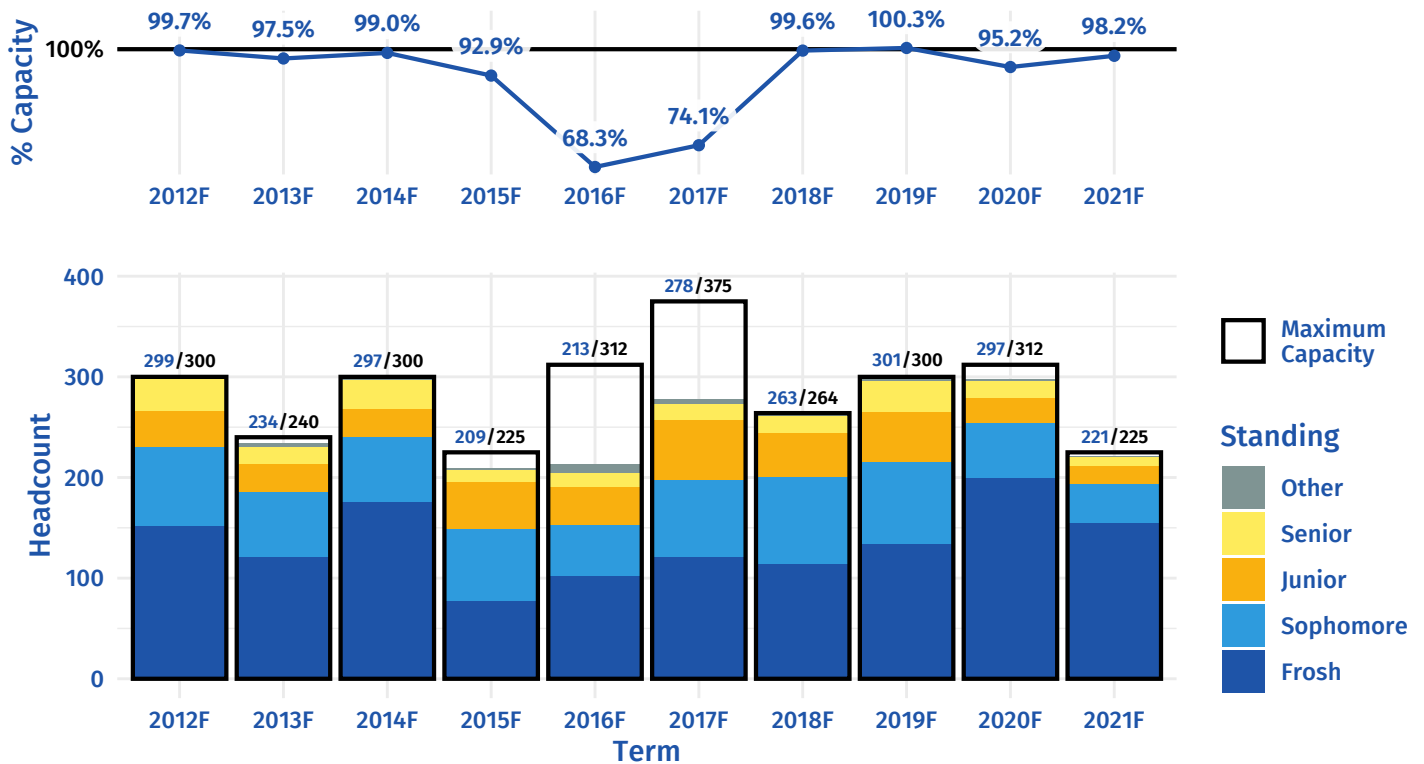
ECON 003 — INTRO TO MICROECONOMICS



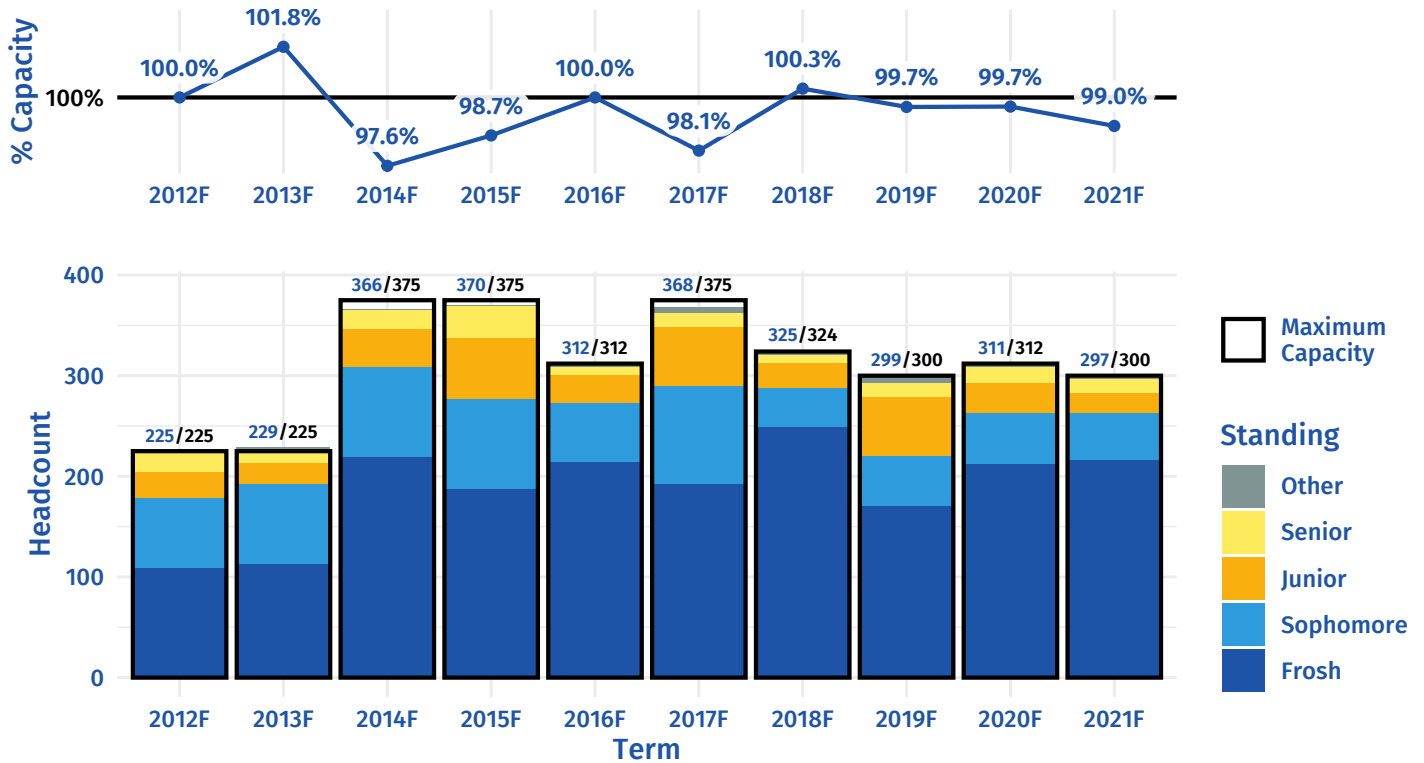
POSC 010 – AMERICAN POLITICS



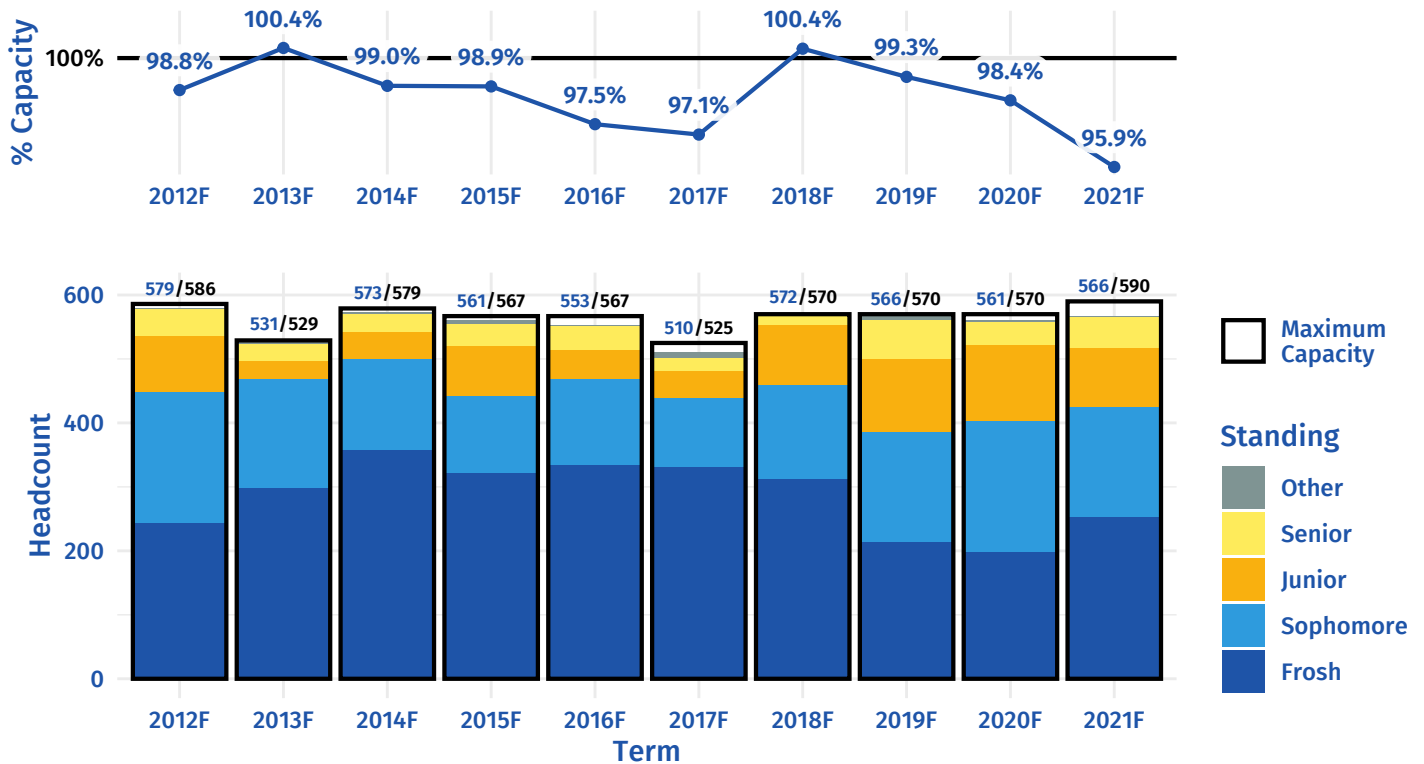
POSC 015 – COMPARATIVE POLITICS



POSC 020 – WORLD POLITICS

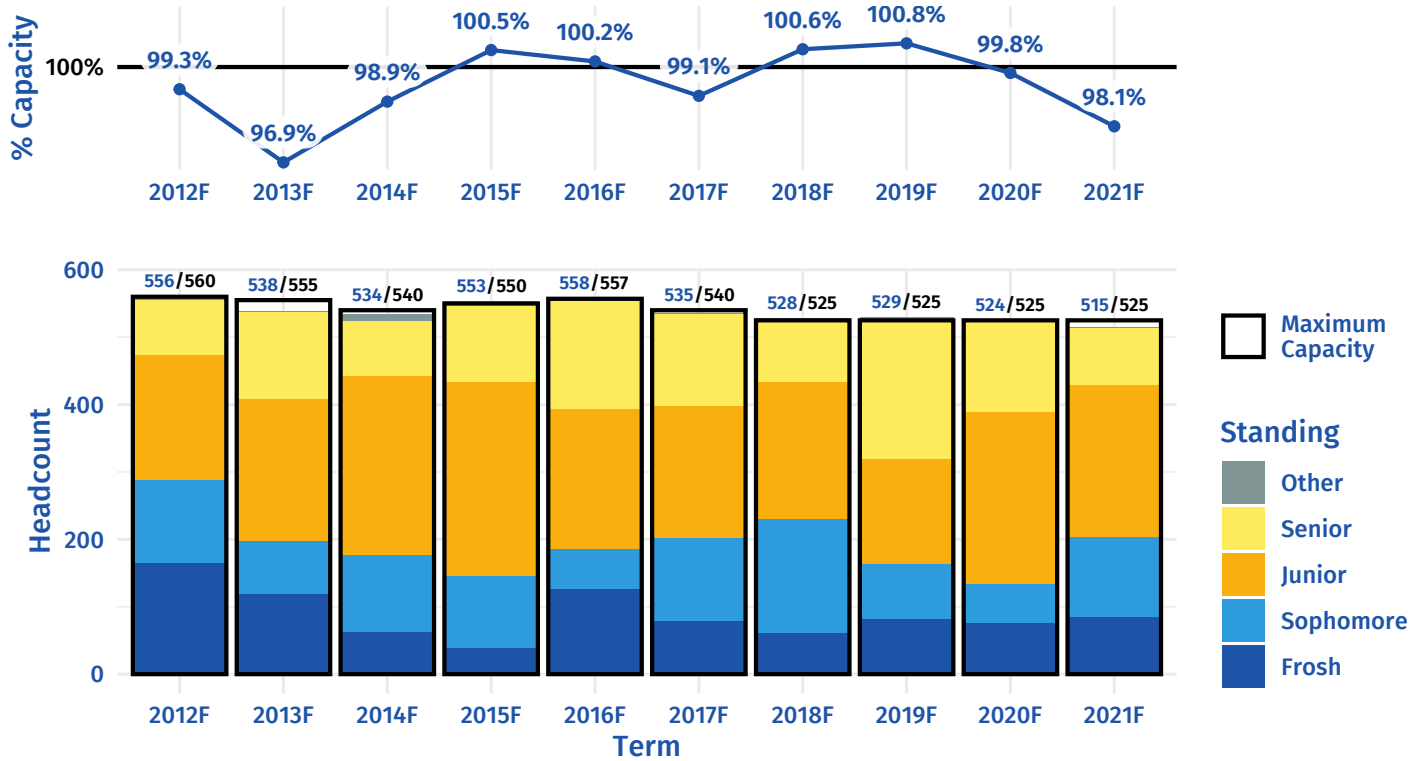


ANTH 001 – CULTURAL ANTHROPOLOGY

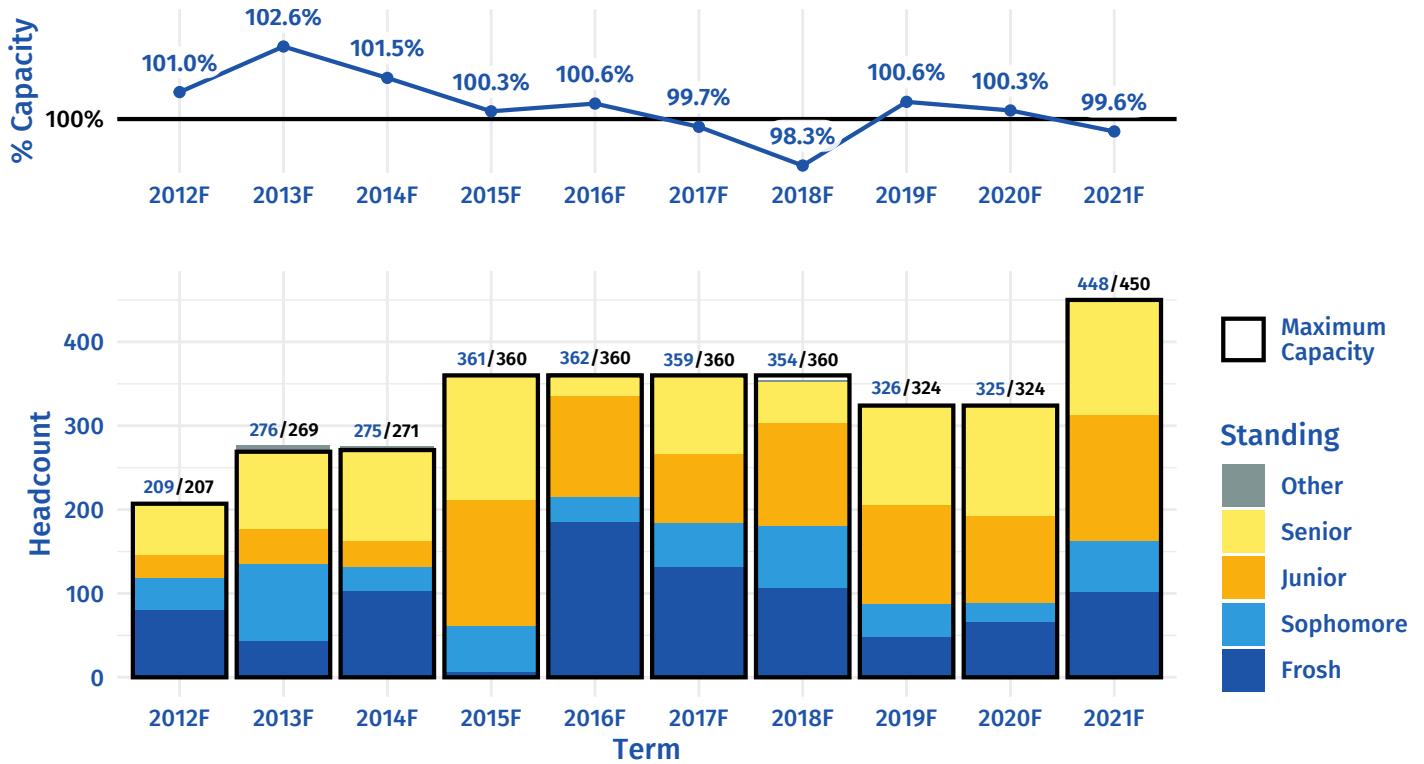


CHASS Selected Lower Division - Humanities

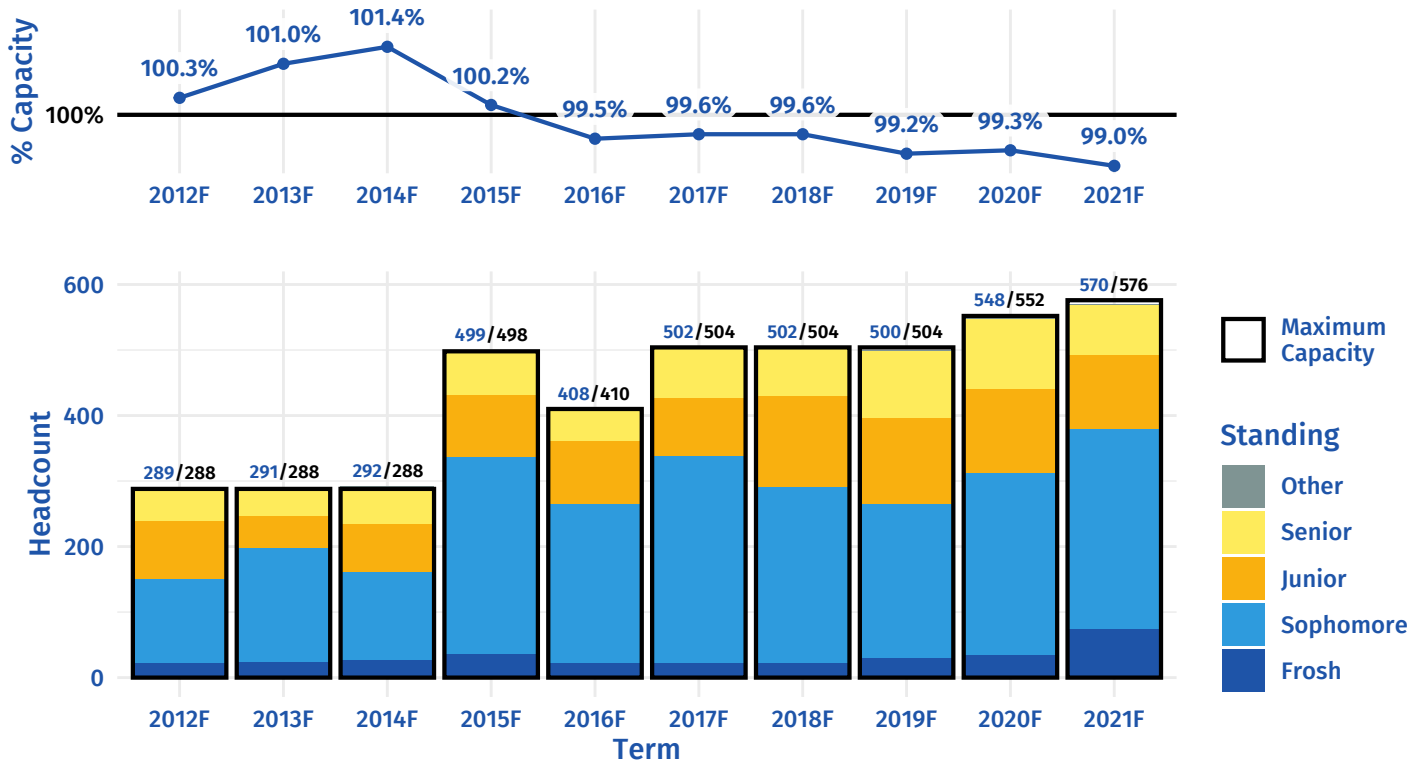
ETST 001 – RACE & ETHNICITY:INTRO



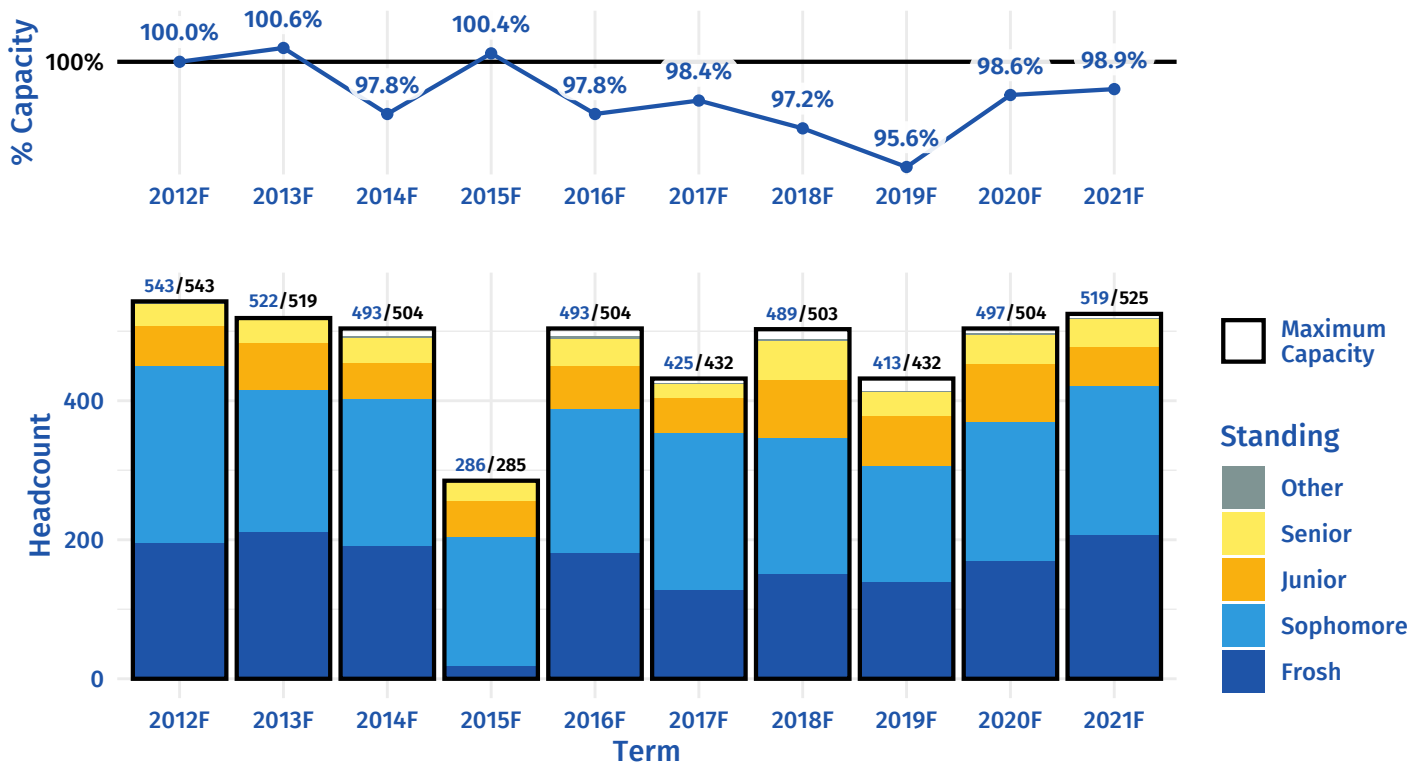
ETST/RLST 012 – RELIGIOUS MYTHS & RITUALS



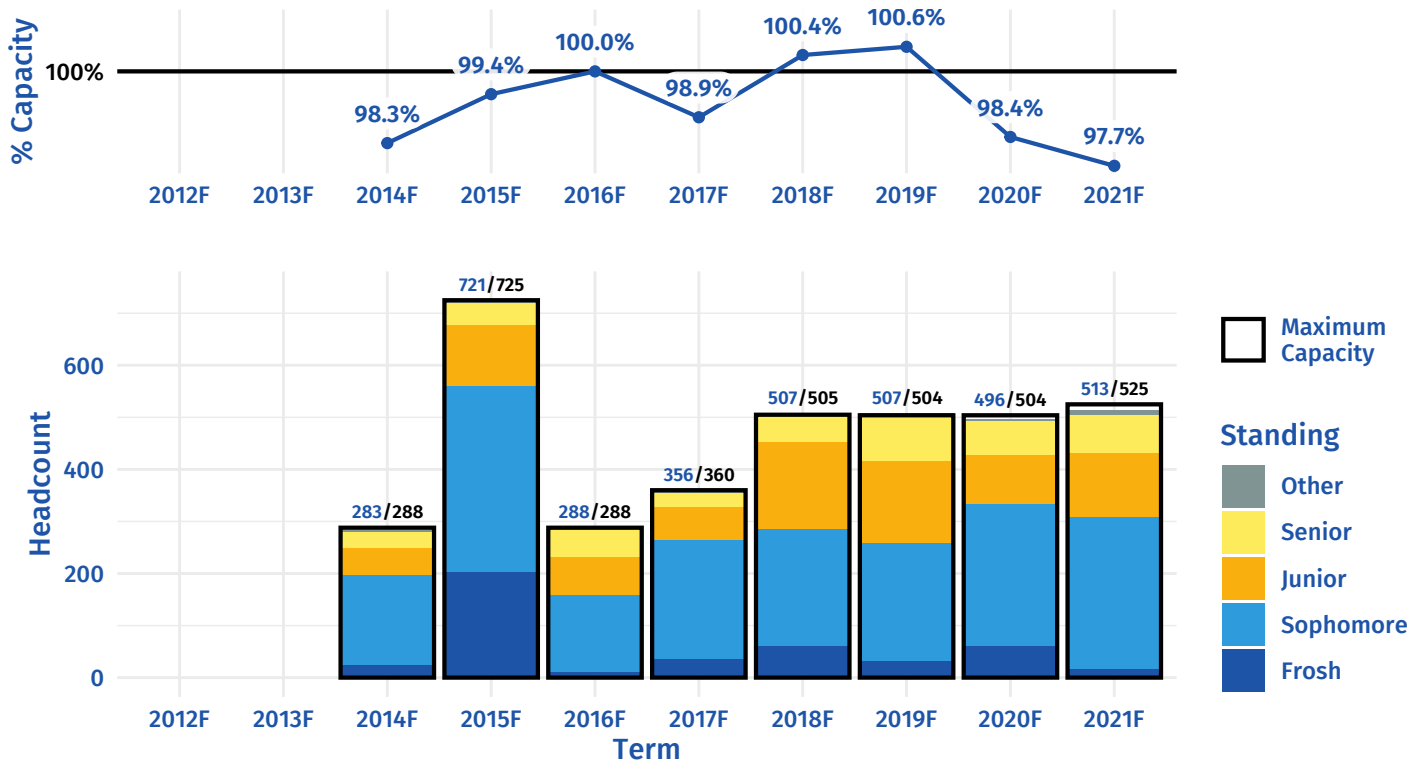
HIST 010 — WORLD HIST:PREHISTORY TO 1500



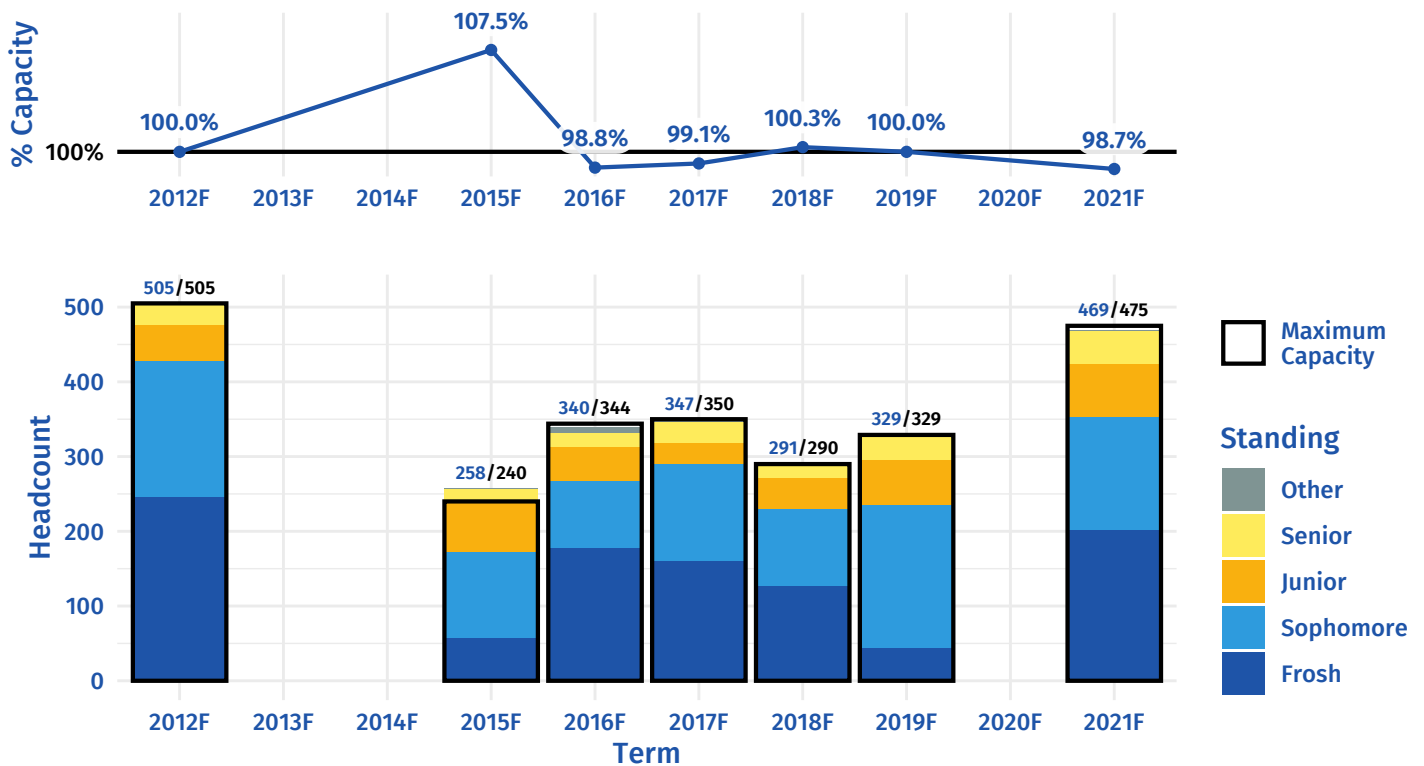
HIST 015 — HONORS: WORLD HISTORY: 1500-1900



HIST 020 — WORLD HIST: TWENTIETH CENTURY

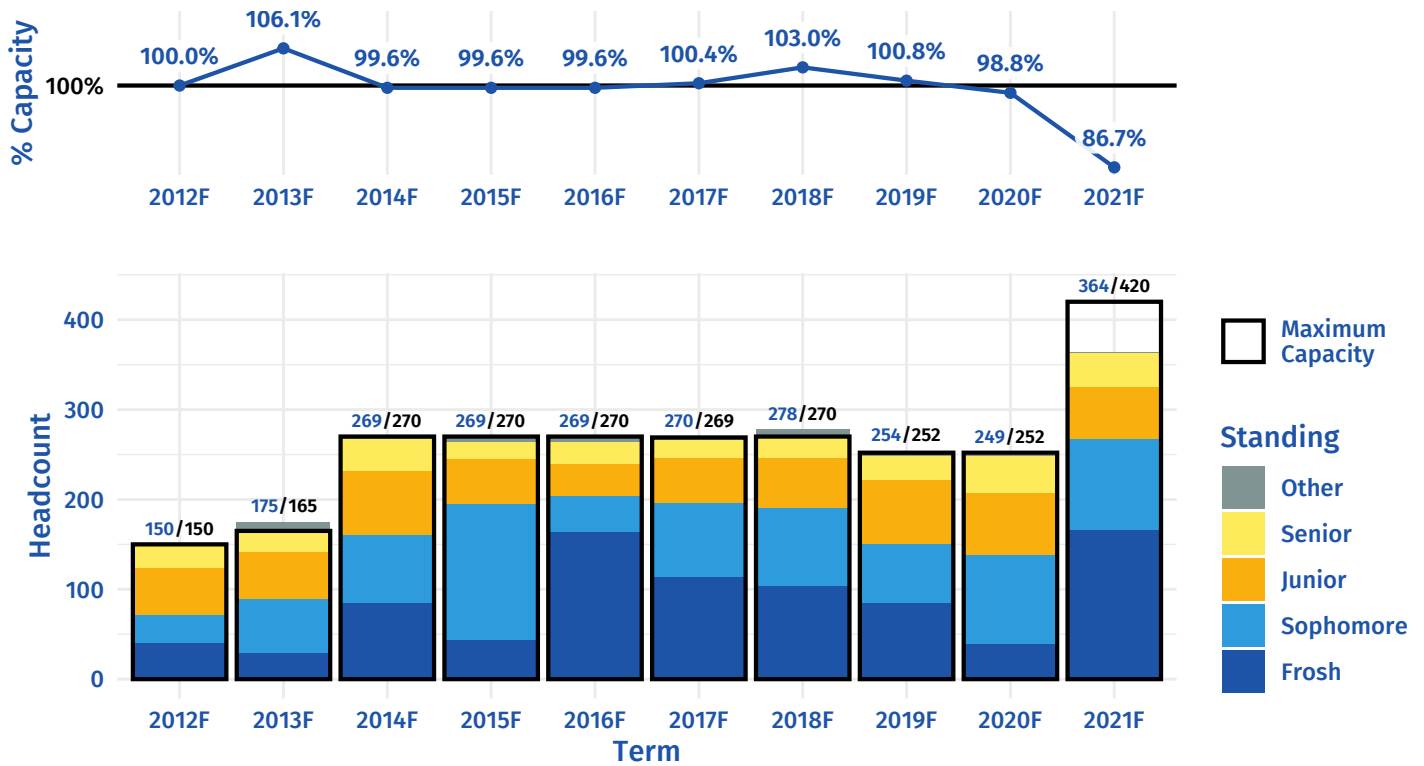


PHIL 001 — INTRODUCTION TO PHILOSOPHY

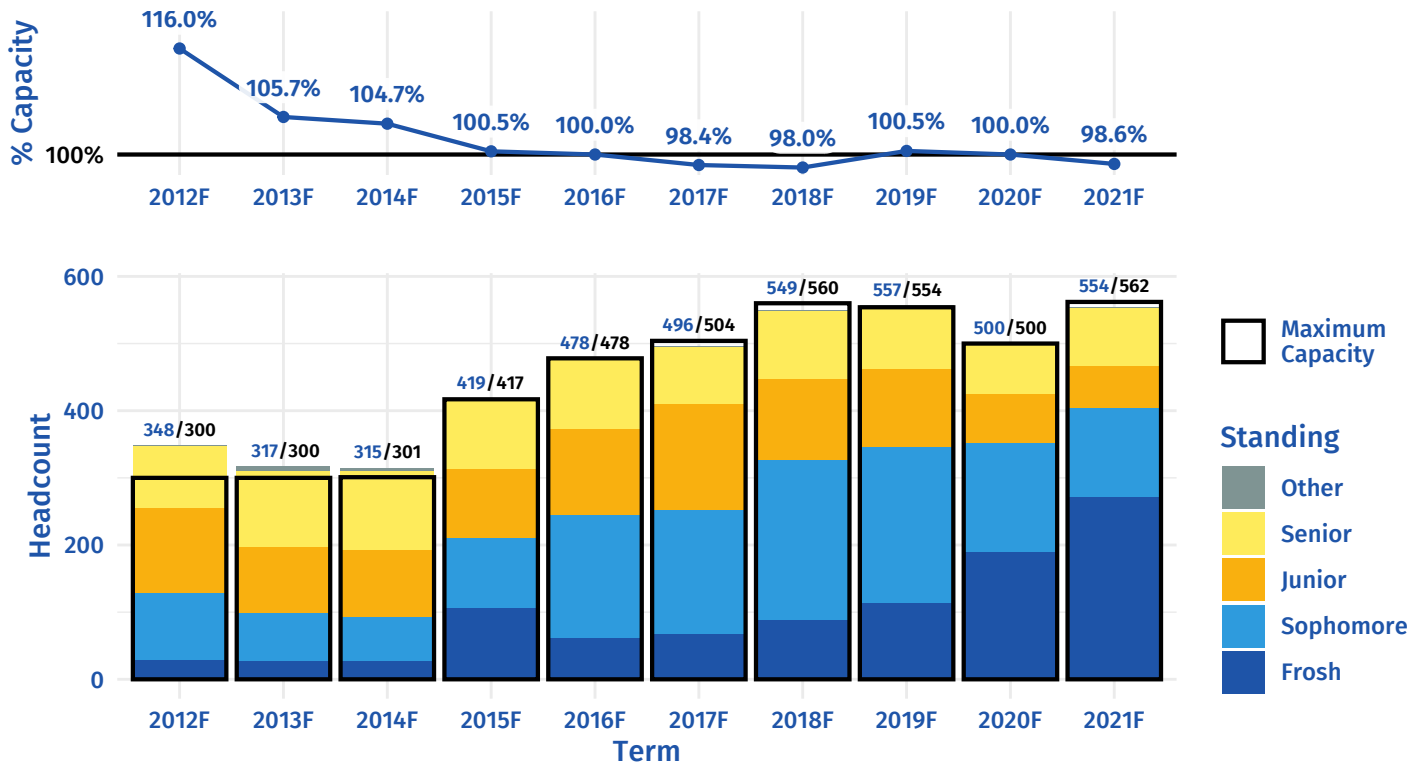


CHASS Selected Lower Division - Arts

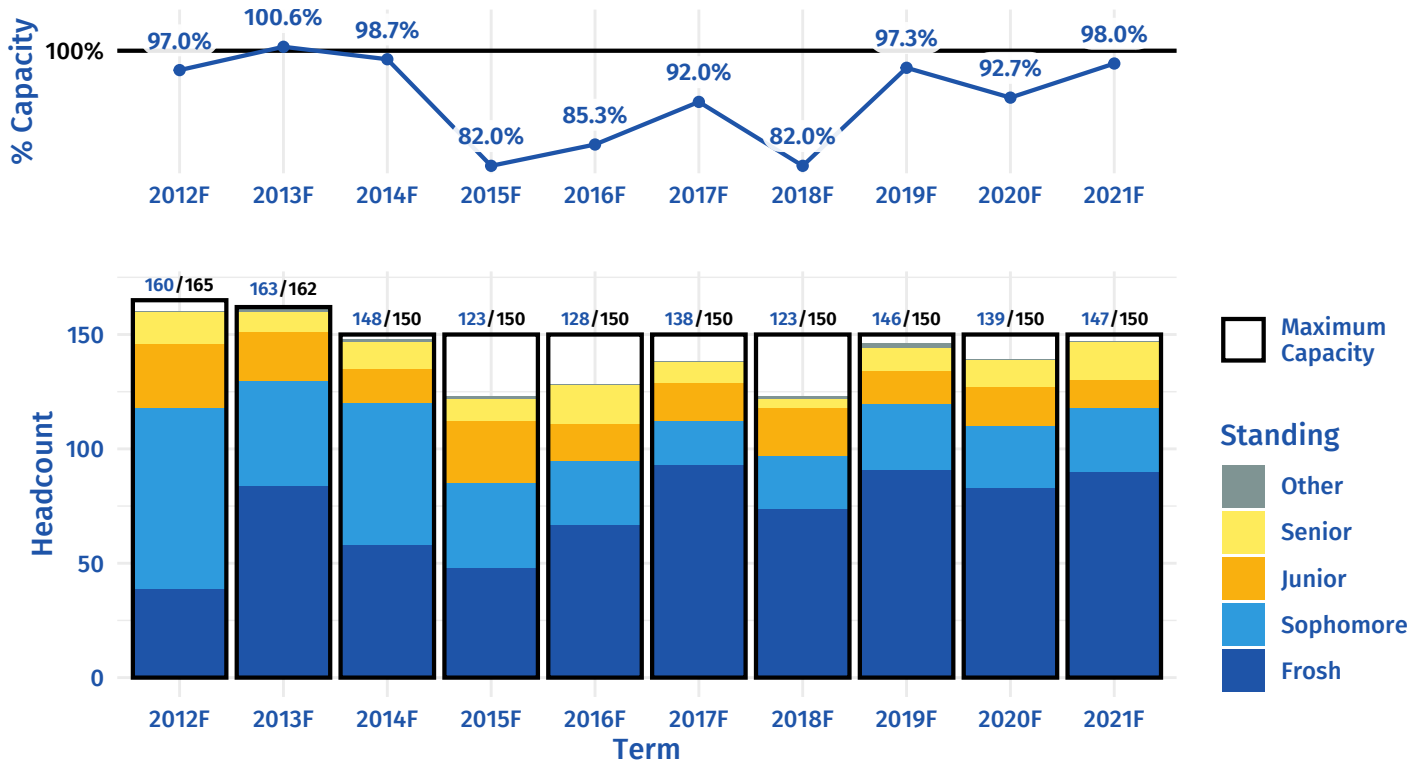
MCS 001 – INTRO MEDIA & CULTURAL STUDIES



DNCE 005 – INTRODUCTION TO DANCE

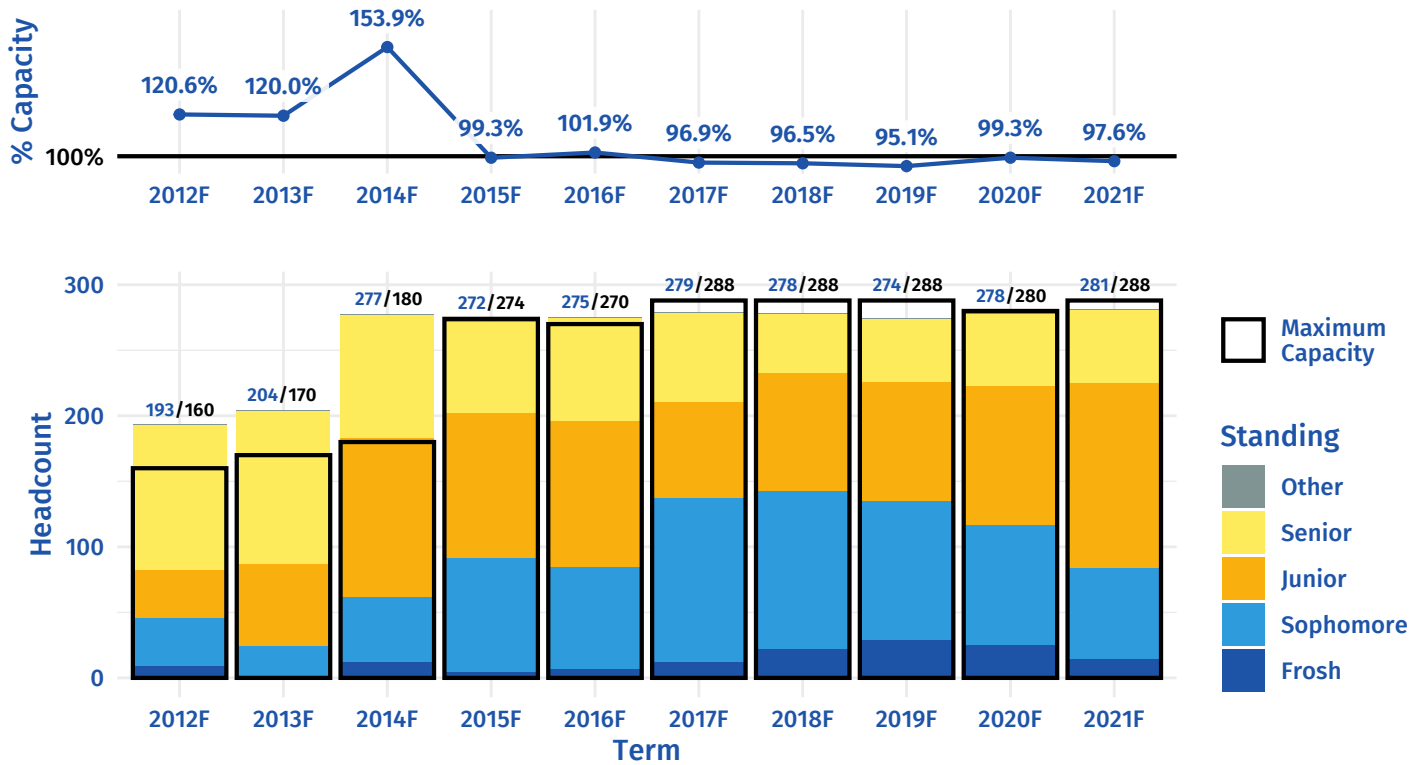


AHS 017A — WSTRN ART: PREHIST TO BYZANTINE

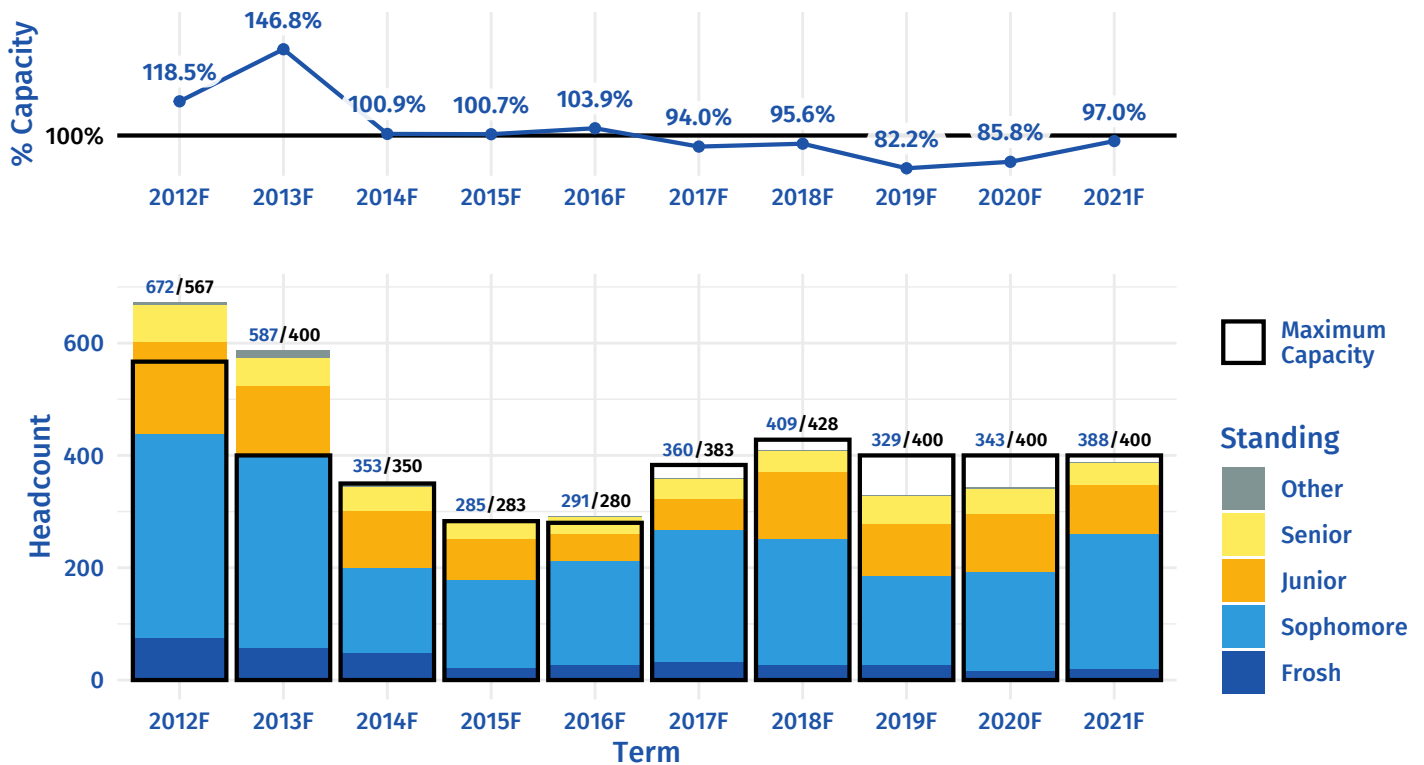


CNAS Selected Lower Division - Biology

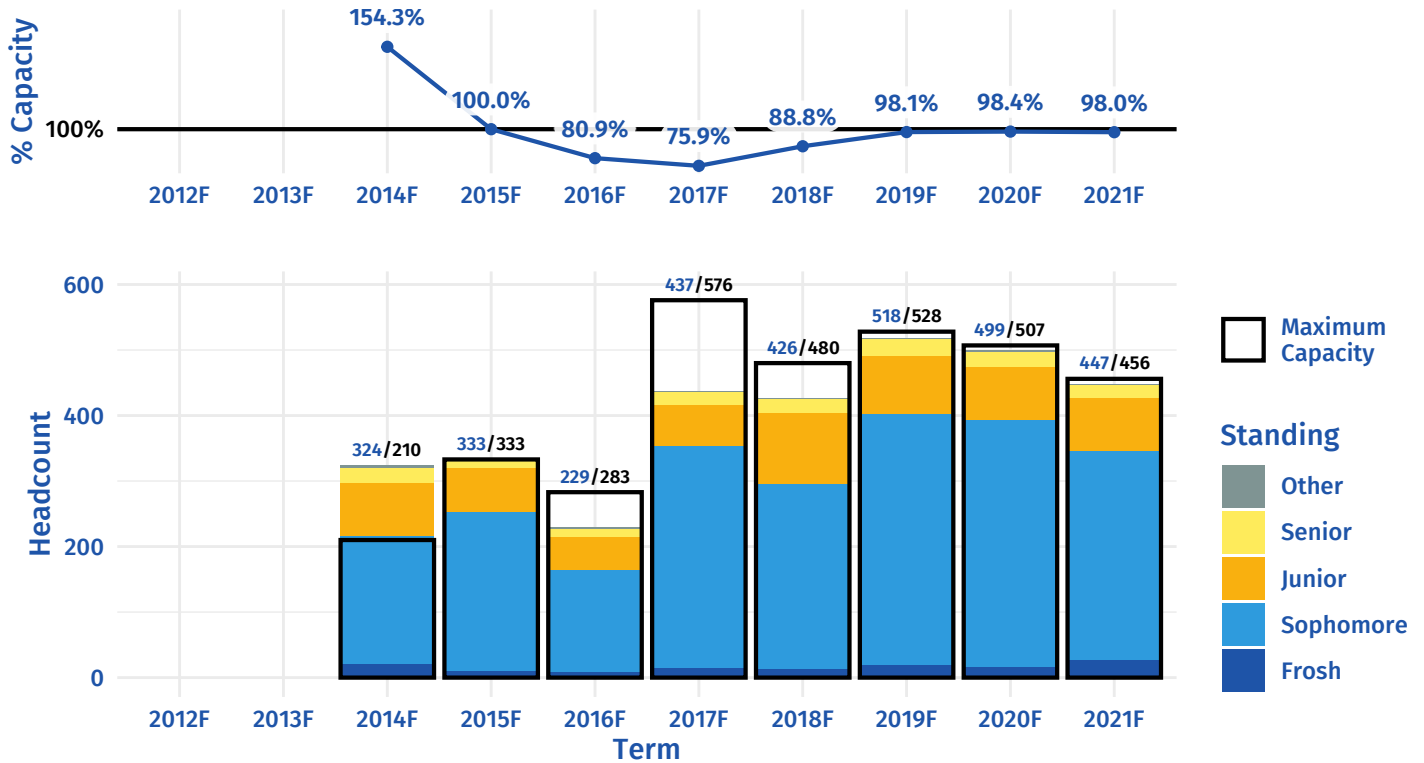
BIOL 002 – CELLULAR BASIS OF LIFE



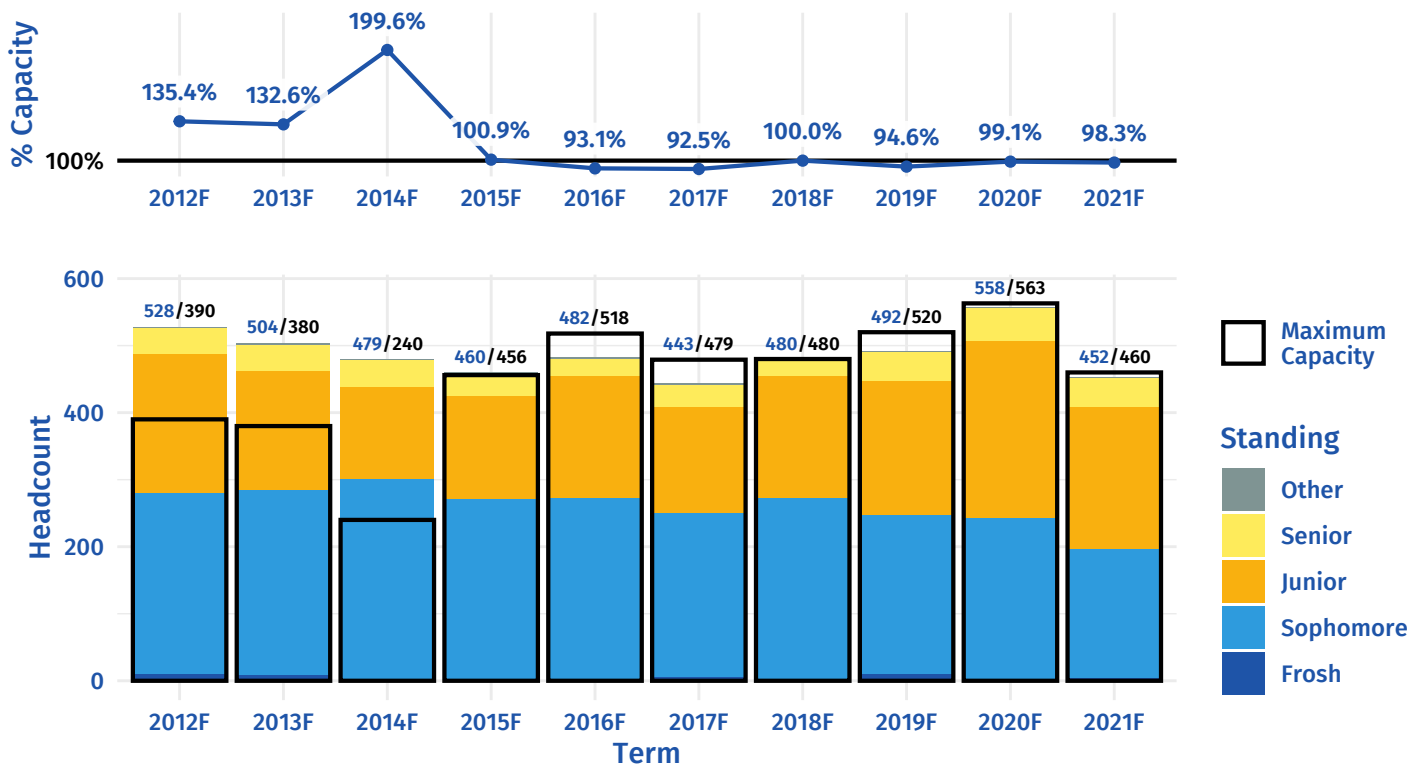
BIOL 005A – INTRO: CELL & MOLECULAR BIOLOGY



BIOL 005B – INTRO: ORGANISMAL BIOLOGY

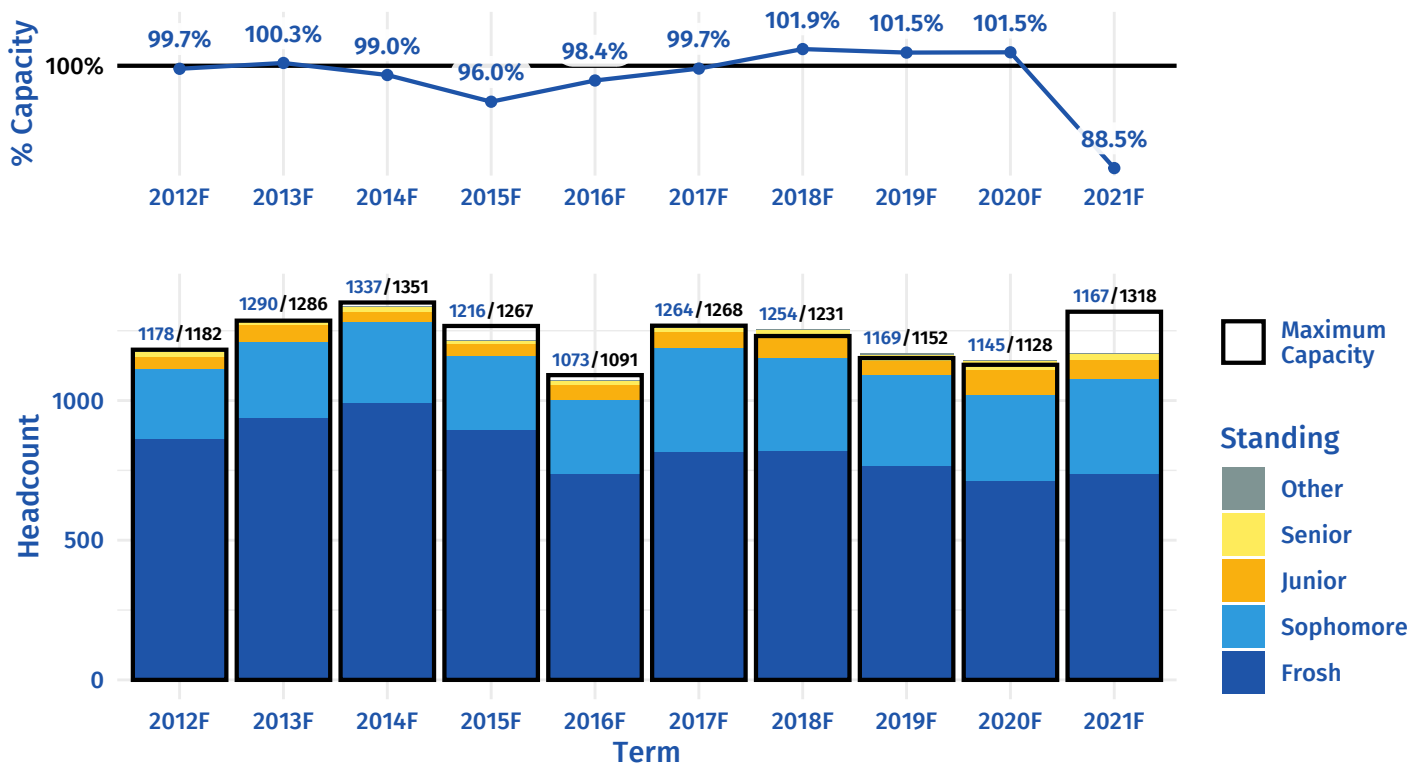


BIOL 005C – INTRODUCTORY EVOLUTION & ECOLOGY

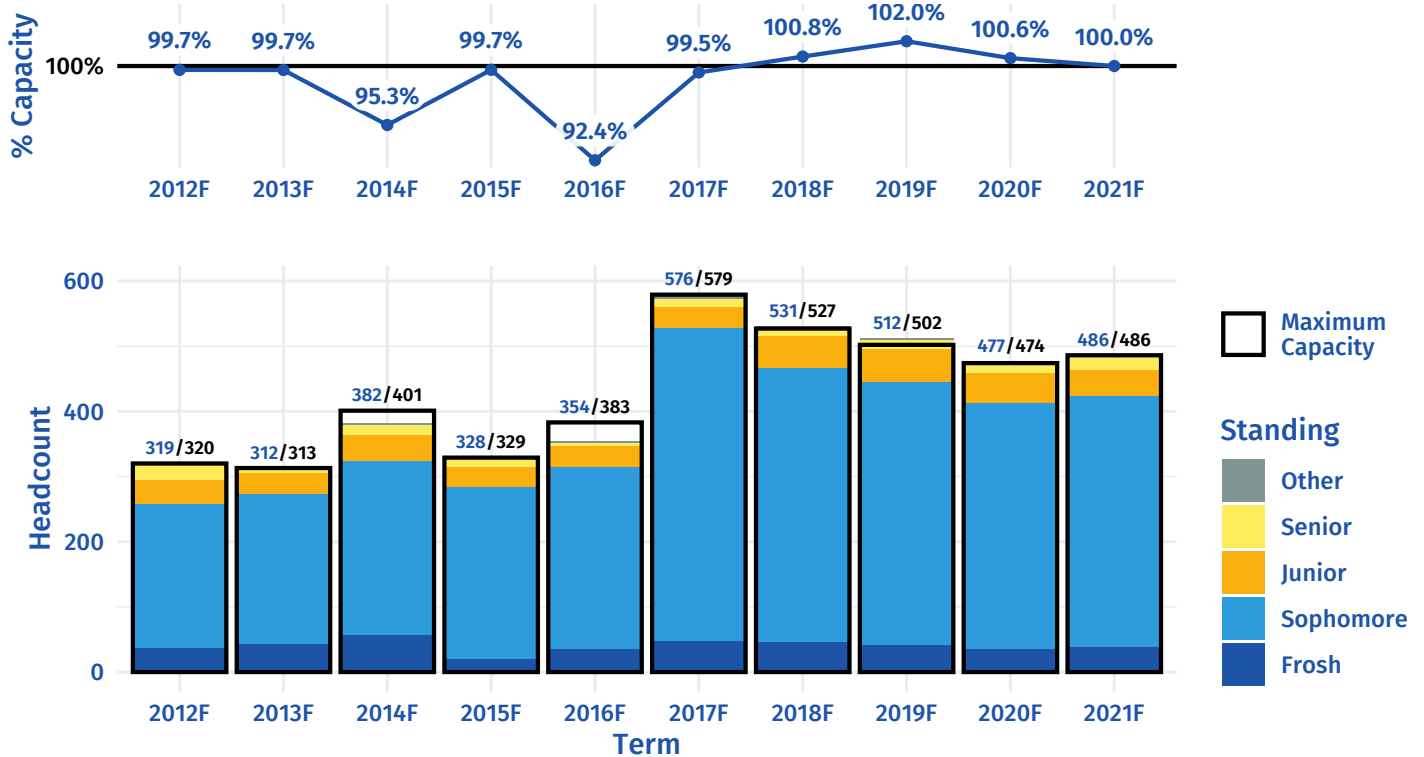


CNAS Selected Lower Division - Chemistry

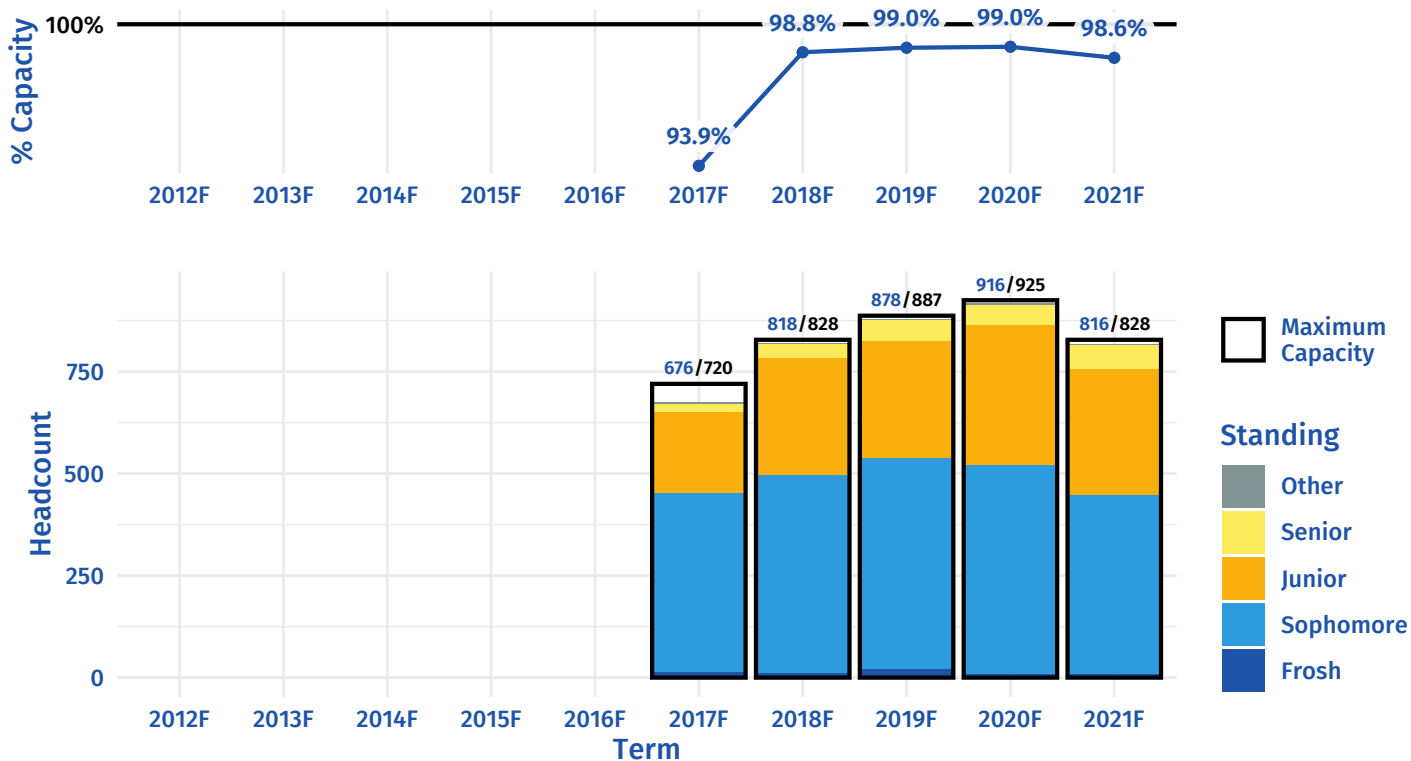
CHEM 001A — GENERAL CHEMISTRY



CHEM 001C — GENERAL CHEMISTRY

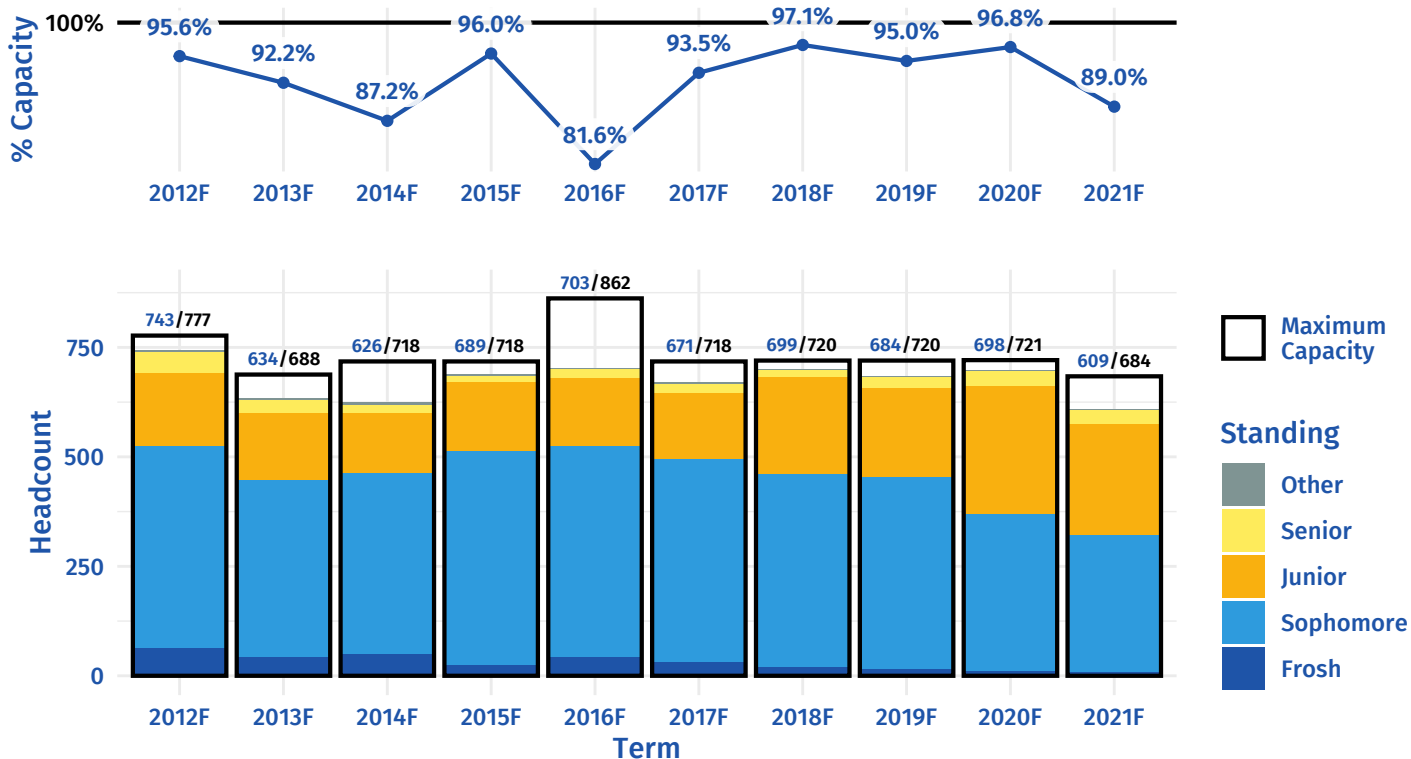


CHEM 008A — ORGANIC CHEMISTRY

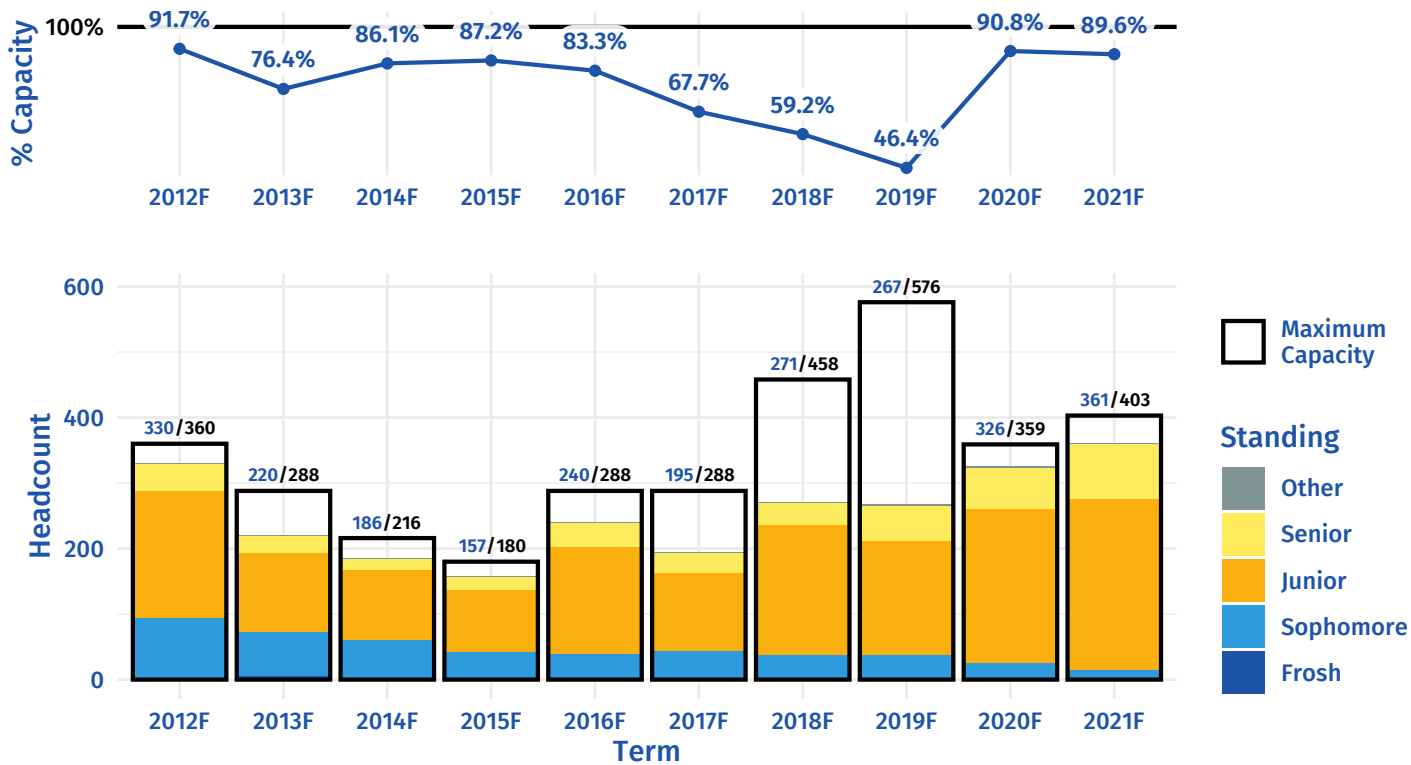


CNAS Selected Lower Division - Physics

PHYS 002A — GENERAL PHYSICS

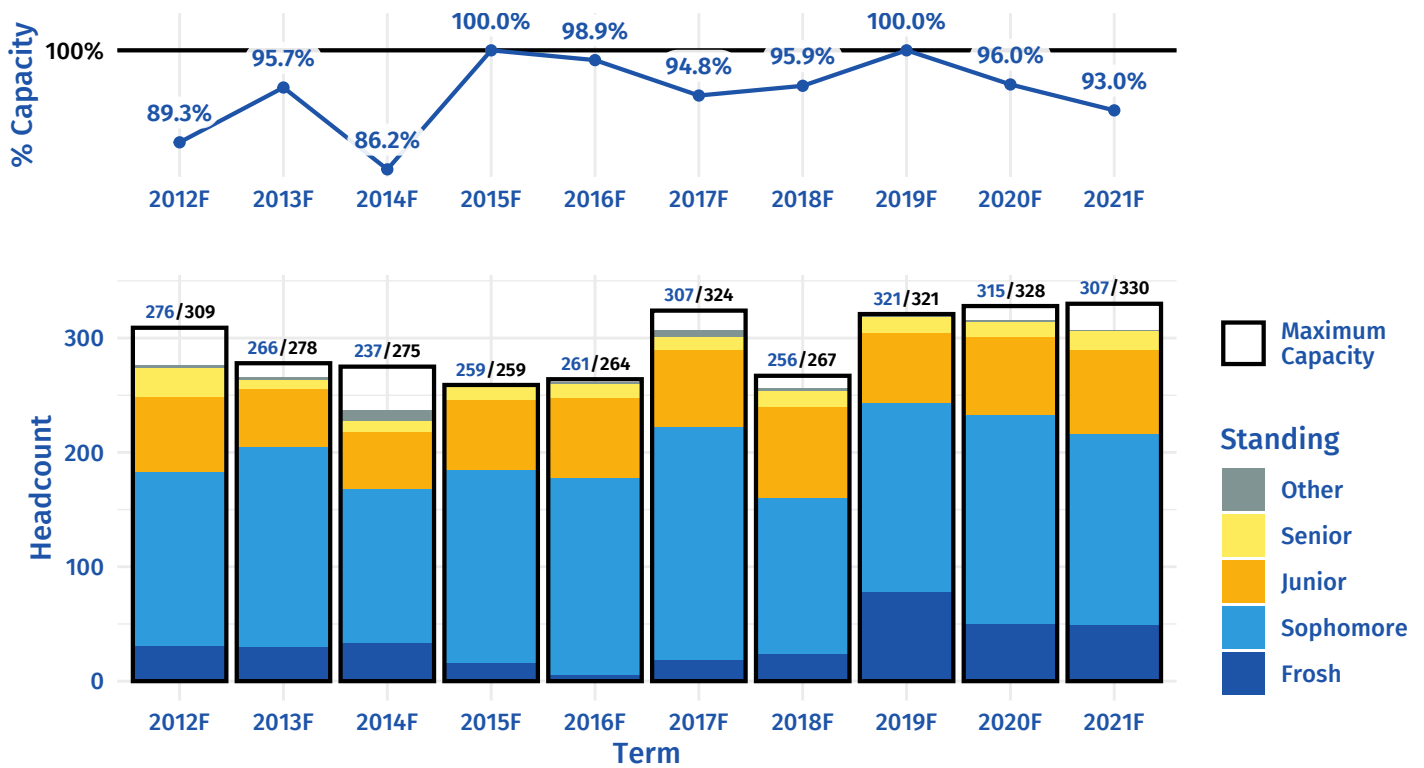


PHYS 002B — GENERAL PHYSICS

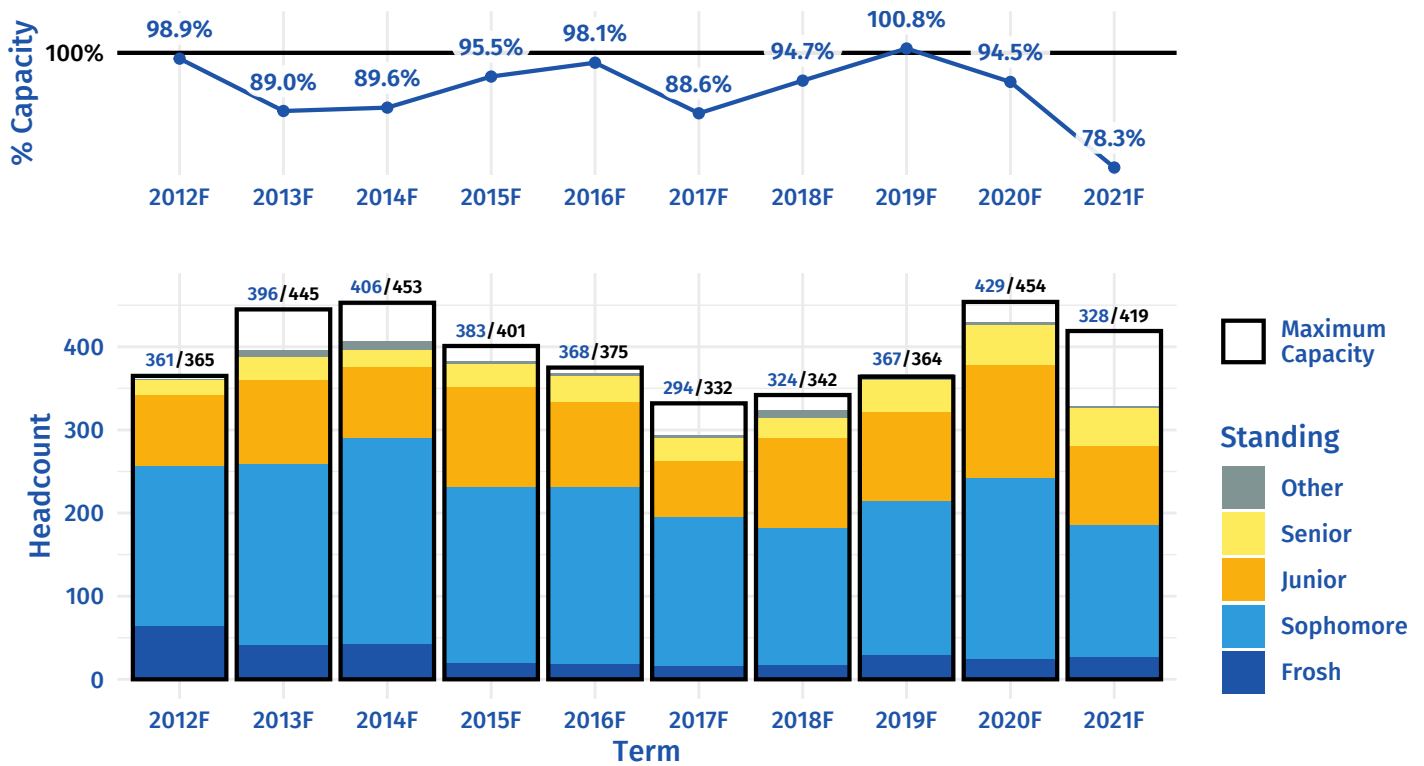


CNAS Selected Lower Division - Math

MATH 010A — CALCULUS:SEVERAL VARIABLES

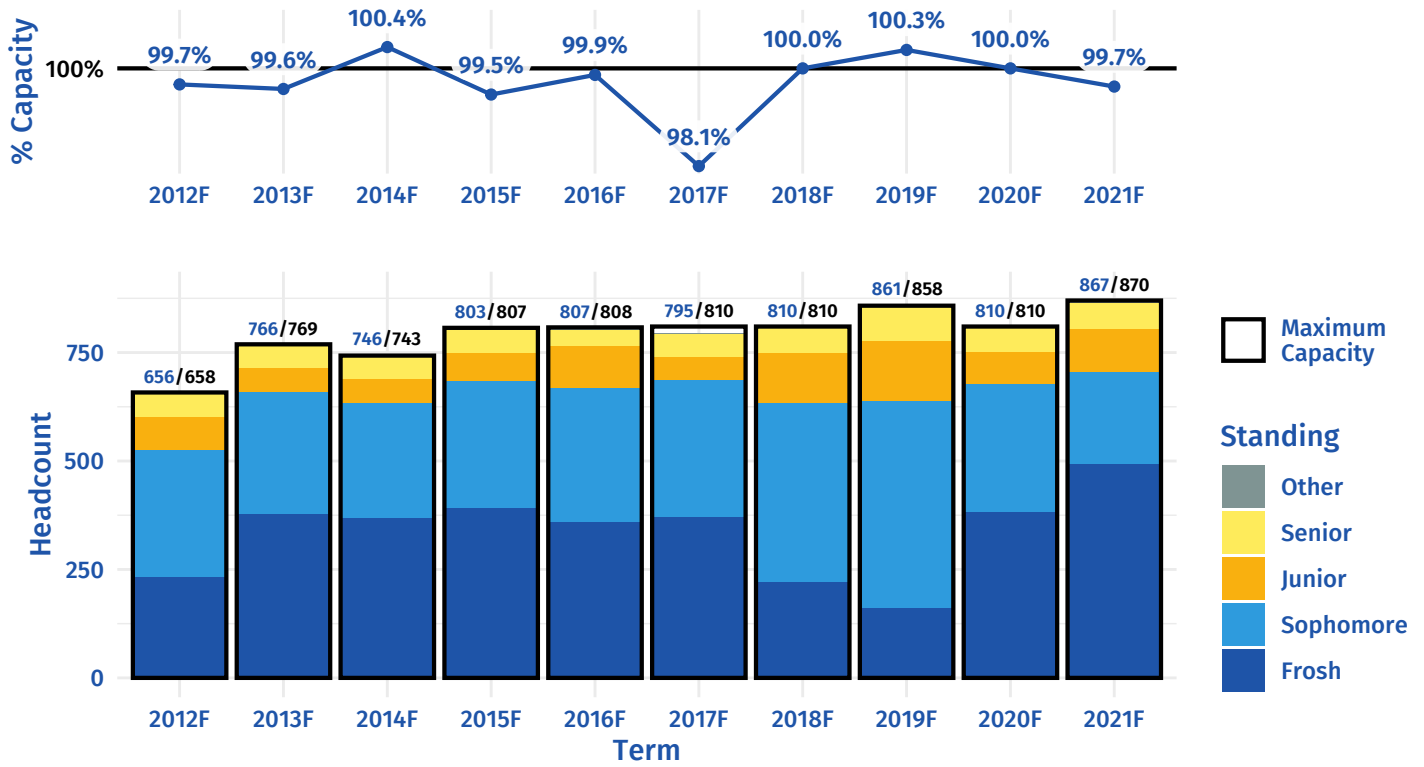


MATH 046 — ORDINARY DIFF EQUATIONS

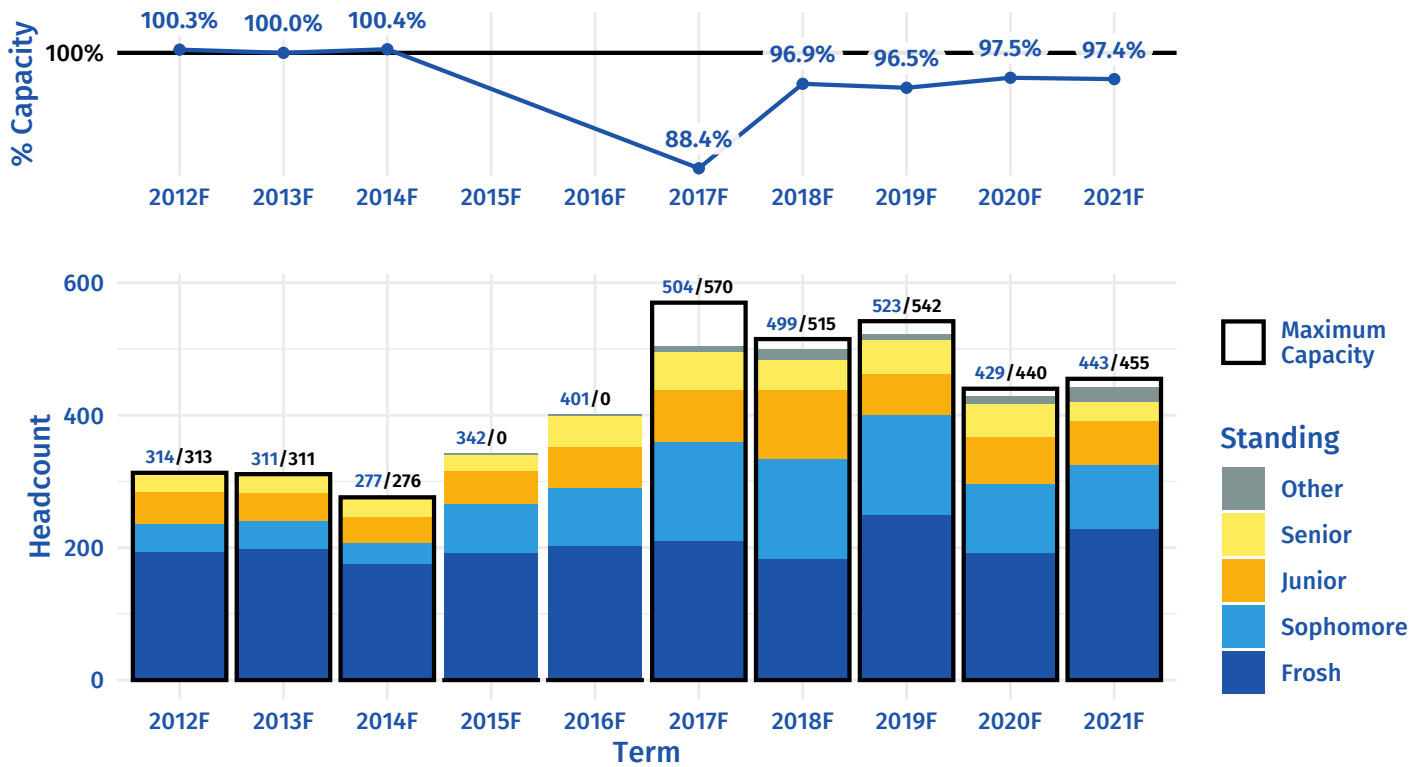


BCOE Selected Lower Division - Computer Science

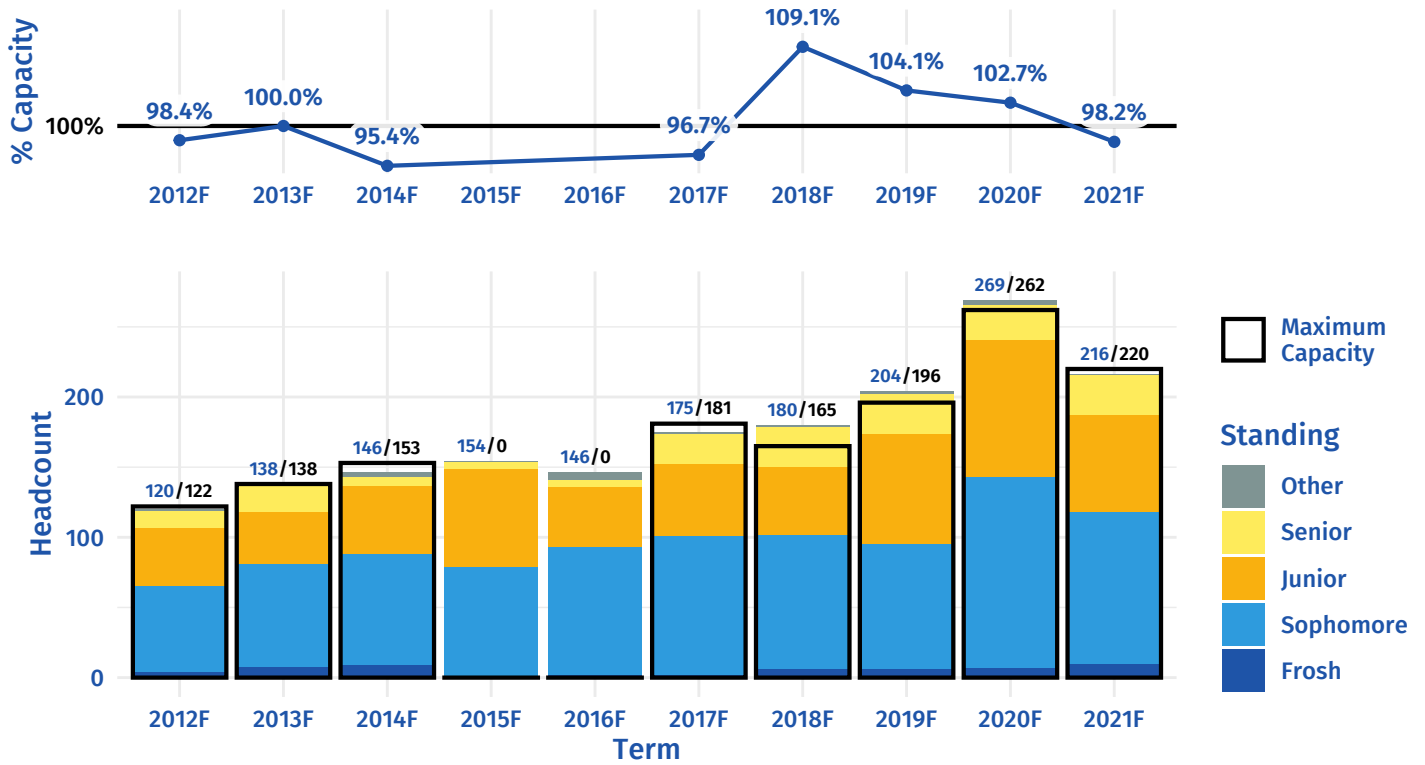
CS 008 – INTRODUCTION TO COMPUTING



CS 010/CS 010A – INTRO TO CS FOR SCI, MATH & ENGR I

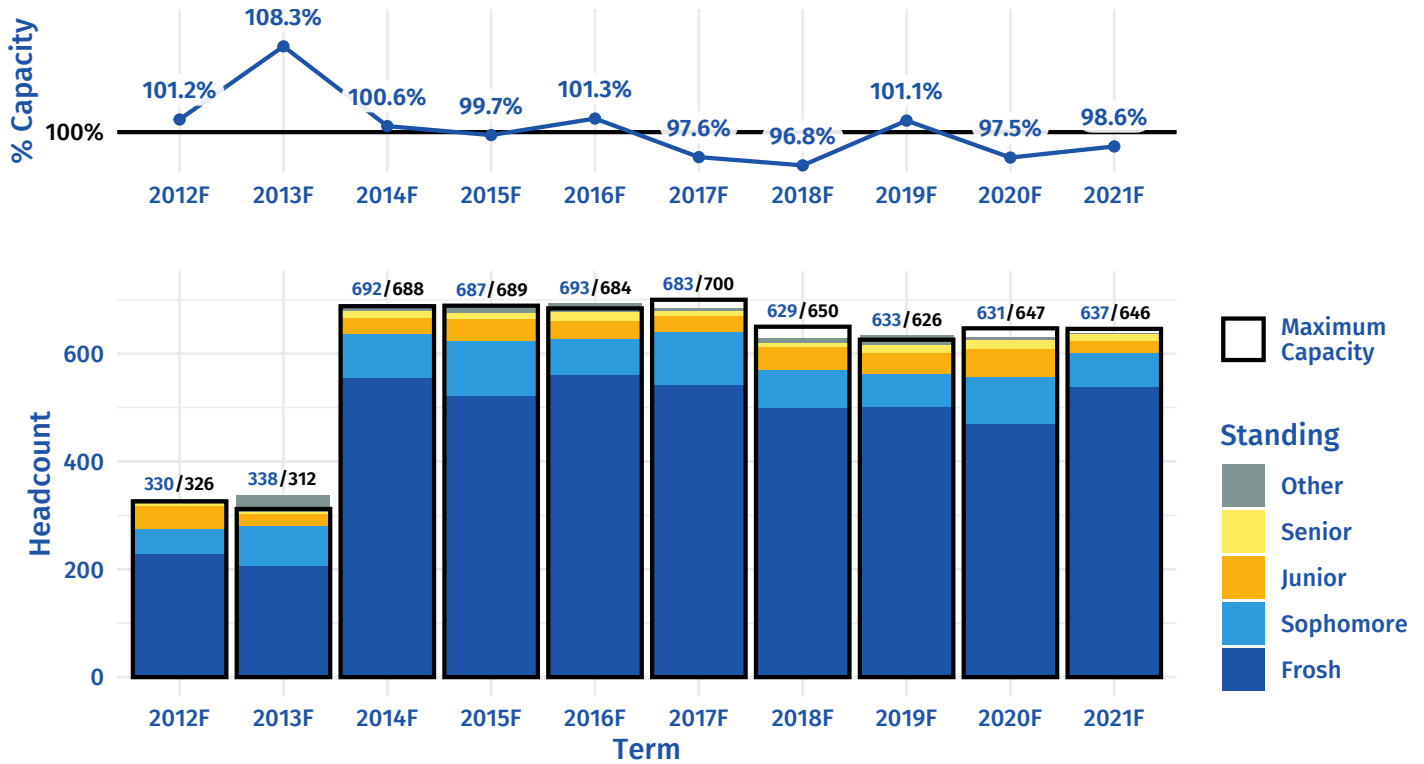


CS 061 — MACHINE ORG&ASSEMBLY LANG PRGM

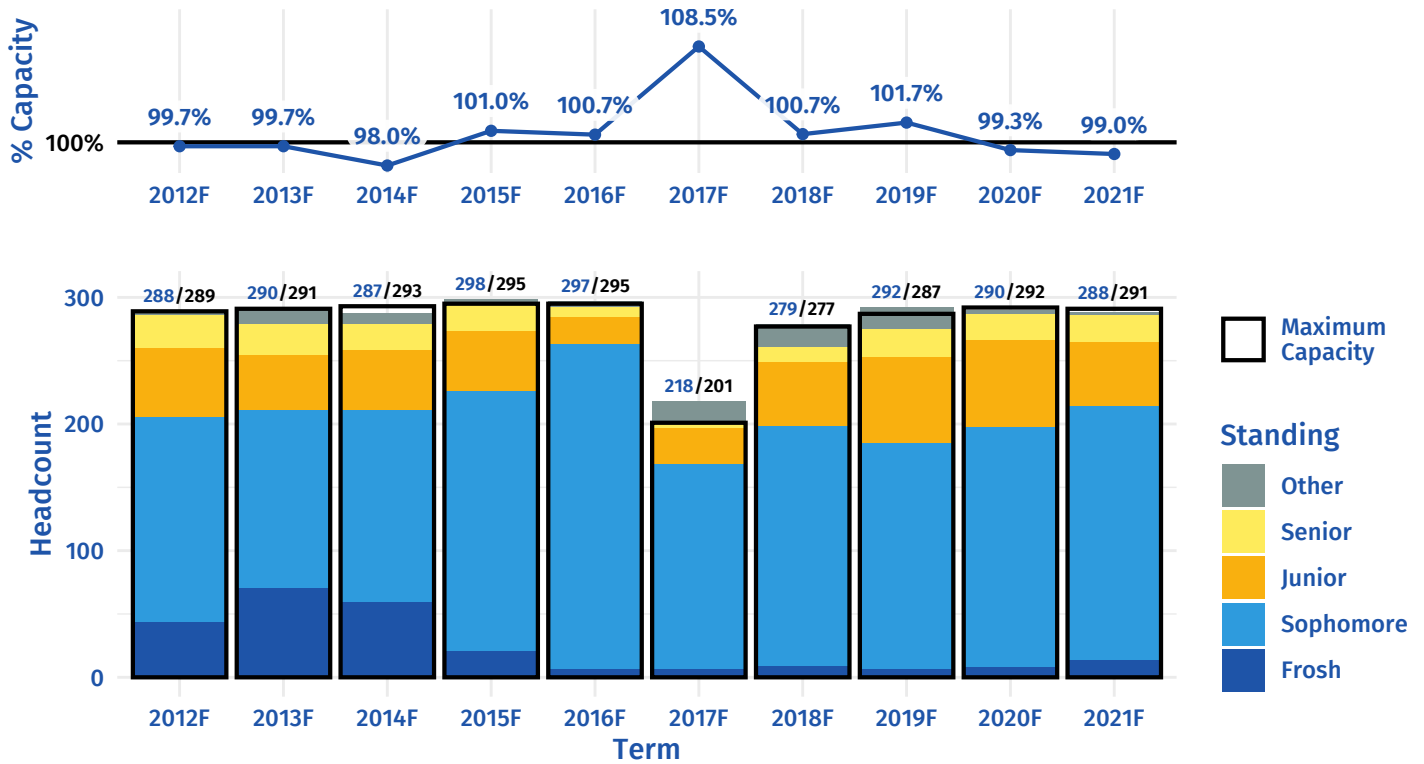


Business Selected Lower Division

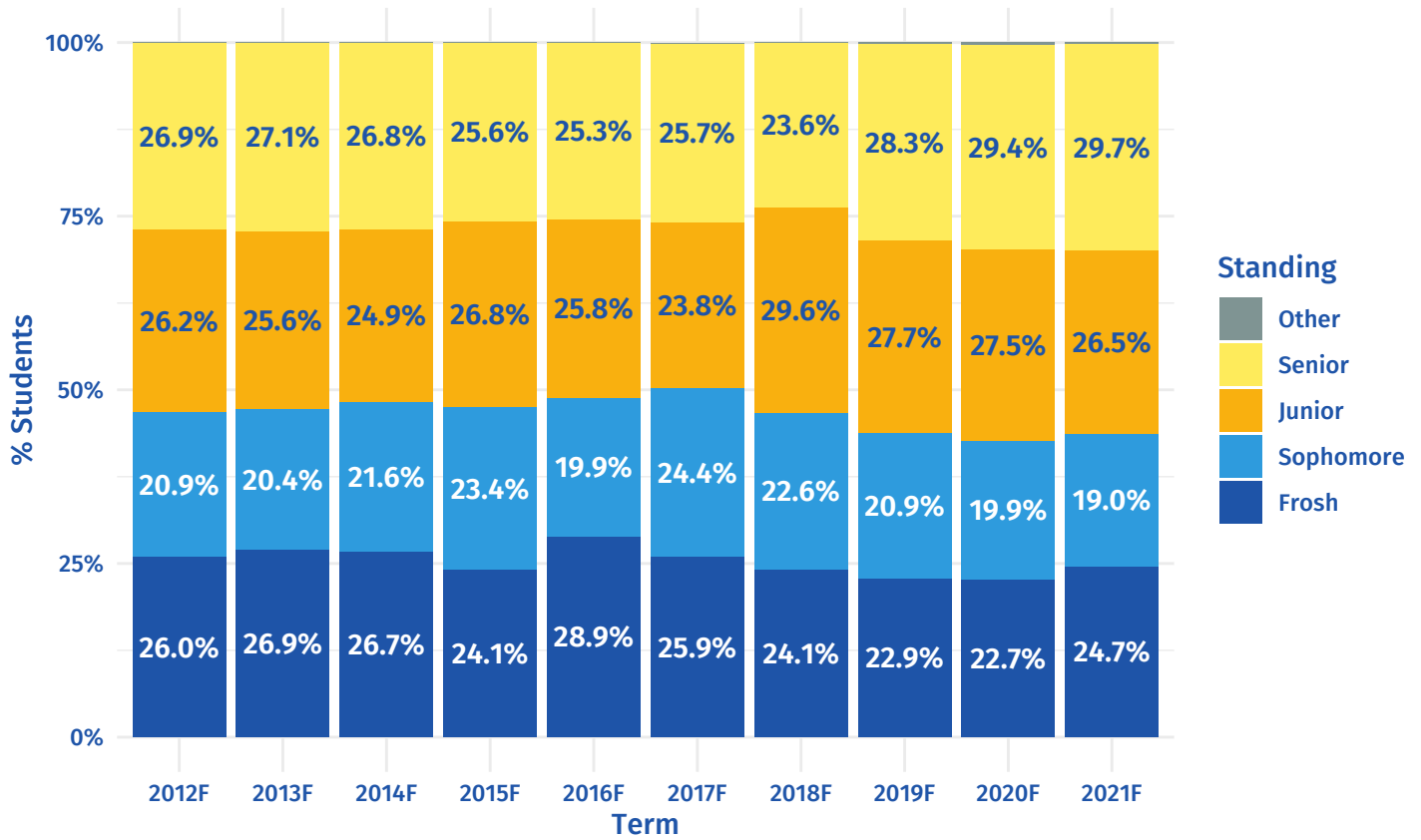
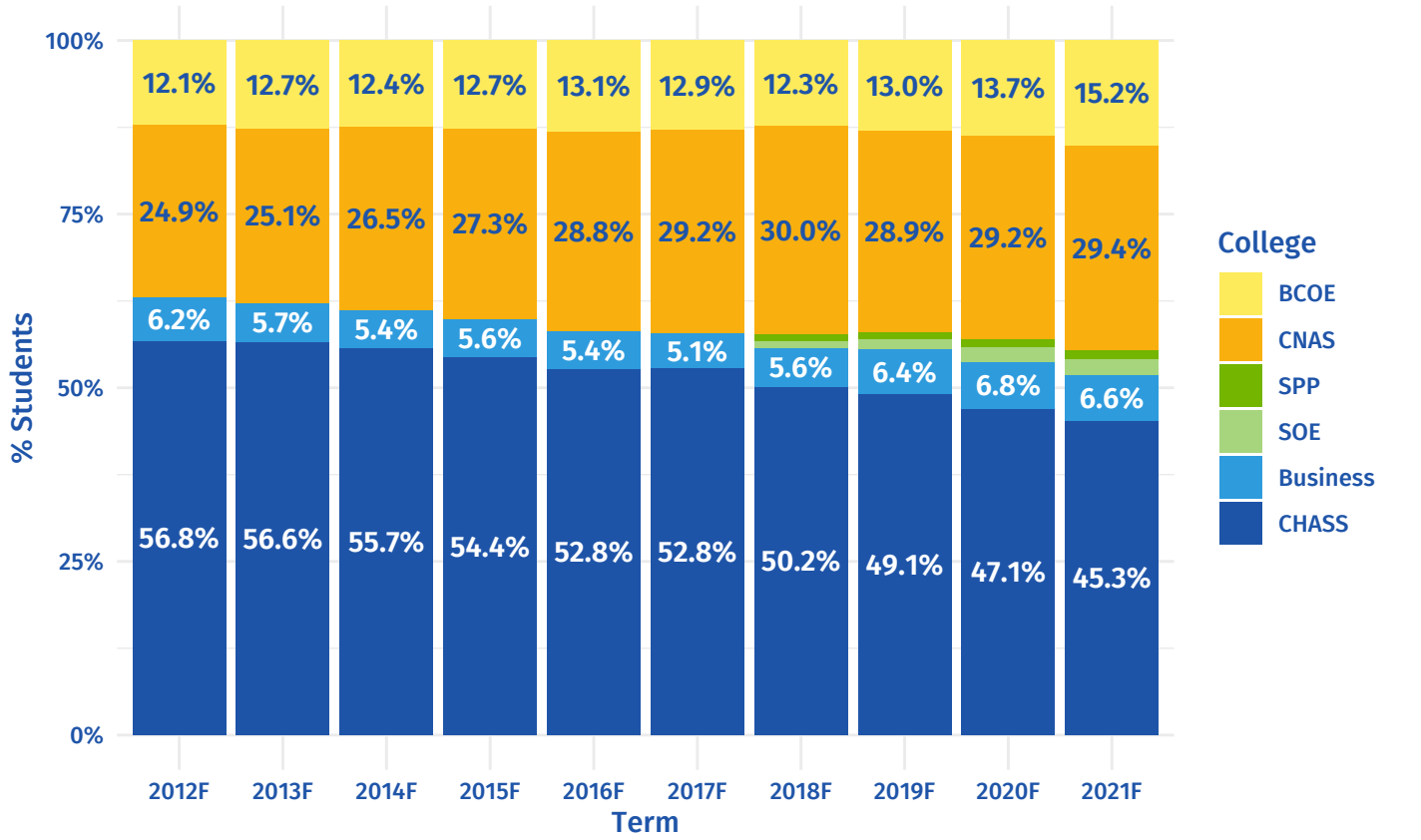
BUS 010 – INTRODUCTION TO BUSINESS



BUS 020 – FINANCIAL ACCOUNTING & REPORTING



Appendix A: Academic Characteristics – Undergraduate Students



Appendix B: Academic Characteristics — New First-Time Fresh Students

